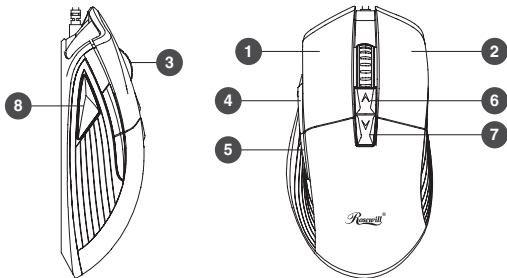


Default Button Functions

1. Left Click
2. Right Click
3. Scroll Wheel
4. Forward
5. Back
6. DPI+
7. DPI-
8. Sniper Key



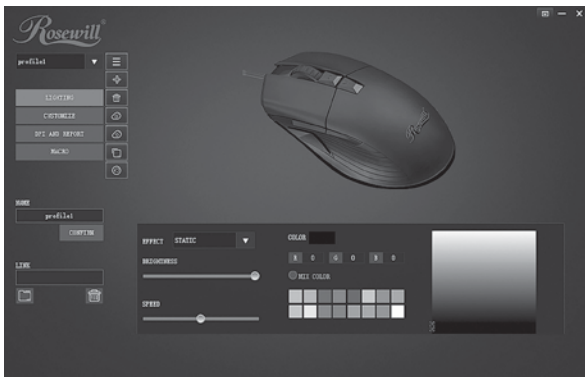
Installation Instructions

1. Plug the USB connector of the **NEON M56** to a USB port on your PC or laptop.
2. Search the keyword “NEON M56” at www.rosewill.com/downloads and download the driver.
3. Unzip the file and double-click “NEON M56.exe” to start the installation program.
4. Installation will run automatically; click “Finish” to complete the installation.

Specifications

Interface	USB
Acceleration	30G / 220 IPS
DPI	800 / 1200 / 1600 / 2000 / 2400 / 3000 / 12400
Polling Rate	125 / 250 / 500 / 1000 Hz
Backlight	RGB
Cable Length	5.9 ft (1.8 m)
Dimensions (L x W x H)	5.16 x 2.76 x 1.61 in (131 x 70 x 40.9 mm)

Software Operations



Via the software suite, you can adjust button configuration and customization. You can save configurations to maximize your gaming experience in every game you play.

System Requirements

- MS Windows Series: Win 7/8.x/10 and above
- Available USB 1.1/2.0 Port and above
- 50 MB Free Hard Disk Space

Package Contents

- NEON M56 Gaming Mouse
- User Manual

