

*Rosewill*<sup>®</sup>

**COOLER RCX-Z940-LX**

user manual



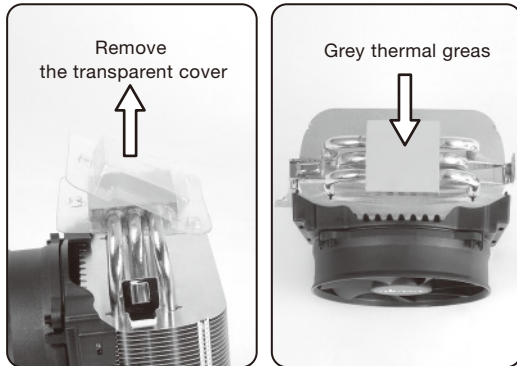
## Installation instruction

### ⚠ WARNING

Improper Installation will result in damage to the processor. Never switch on the computer system until the fan is connected on to the motherboard power connector.

#### STEP 1

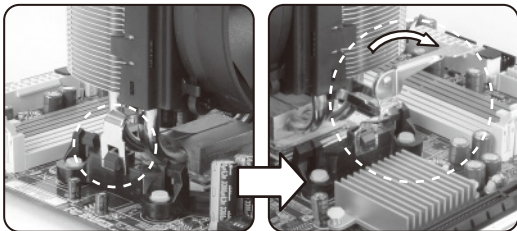
Pre-installation



Ensure the surface of the CPU die is perfectly clean. Hi-performance thermal interface compound has been preapplied to the heatsink and protected by a transparent plastic cover which must be removed prior to installation.

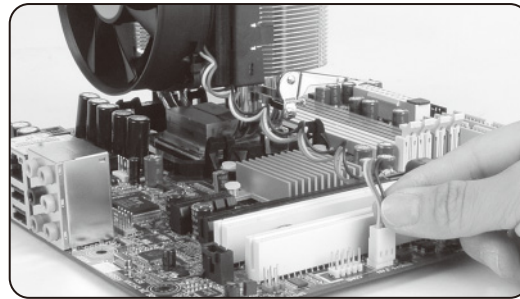
#### STEP 2

Clip Attachment



1. Place heatsink inside retention module on CPU.
2. Carefully position each end of the clip so the cut-out engages with the lugs on the retention module.
3. Push down the clip arm so the cooler is held firmly in the retention module.

#### STEP 3



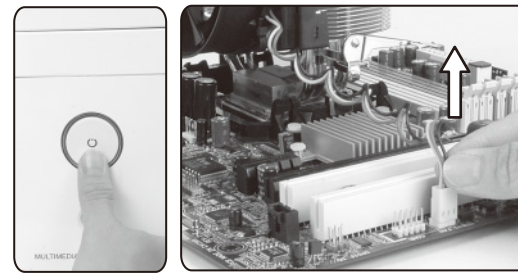
Connect the CPU cooler fan to the motherboard power connector marked CPU FAN. This connector is keyed so the power lead can only be installed one way. If a connector marked CPU FAN is not apparent on the board, check the motherboard manual for fan connection information.

## Uninstall Manual

### ⚠ WARNING

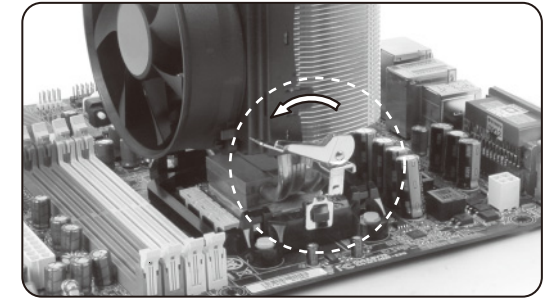
Improper Installation will result in damage to the processor. Never switch on the computer system until the fan is connected on to the motherboard power connector.

#### STEP 1



Make sure the PC is turned off and disconnect the fan from motherboard power connector ( placing the PC in horizontal position is recommended ).

#### STEP 2



Release the cooler by pulling up the clip arm. Make sure both ends of the clip are unhooked from the retention module lugs and remove the cooler by lifting it up gently.

Thank you for purchasing a quality Rosewill Product.  
Please register your product at : [www.rosewill.com](http://www.rosewill.com)  
for complete warranty information and future support for your product.