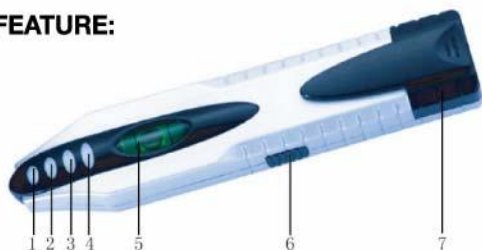
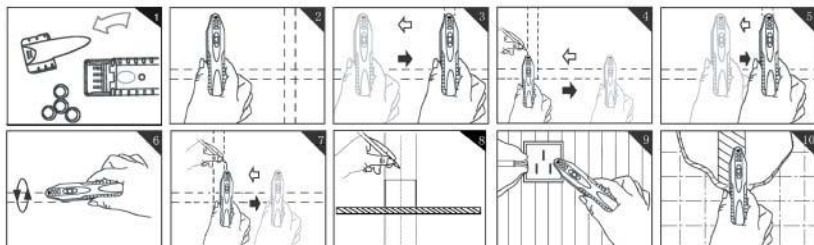


FUNCTION:

- * Detect the location of a stud under nonmetallic surfaces.
- * Able to use the leveling bubble to check the grade of a surface.
- * Stud finder can finds wood or metal studs behind standard interior drywall but can not distinguish materials.

FEATURE:


No.	Part Name	No.	Part Name
1	Red LED	5	Level bubble
2	Yellow LED2	6	Detection switch
3	Yellow LED1	7	Battery compartment
4	Green LED		


Illustrate with pictures

- Step1 Open the battery covers and plugs in four 1.5V LR44 batteries;
- Step2 Put the device on the wall surface and press the keystroke while the Green LED should glowing;
- Step3 Put the device on the wall surface, then where you'd move it left and light or back and forth, shutting and slowly;
- Step4 When the device successfully locates the object, the RED LED glows with frequent beep, which indicating the device has detected the wood stud's edge. Mark it;
- Step5-6 Moving devices toward the wall shutting and slowly, double check the object detection position;
- Step7 The same as the Step 4;
- Step8 The midpoint of the two marks is the stud center;
- Step9&10 The RED LED glows with frequent beep, which indicating the device has detected the object like as metal, stud or dense material.

PREPARING FOR USE:

Ensure there are batteries in the detector:

- 1) Open the battery compartment door on the back of the unit;
- 2) Insert four batteries into the battery compartment;
- 3) Close battery compartment door.

OPERATING INSTRUCTION:

1. Initialization

It is necessary to initialize the device on a wall or a flat surface before scanning for studs.

****Note:** While initialization, the unit should not be placed directly on a stud or a dense material such as metal or wet or freshly painted areas, as that will cause improper initialization. In such circumstance, the unit will not give correct indication. To prevent this, please move it away and try again.

Initialization Step:

- 1) Put the device on a wall or a flat surface
- 2) Press and hold the button but do not move the device
- 3) Red LED should be glowing, indicating the beginning of Initialization
- 4) In about one second, the Red LED should turn off while the Green LED should start glowing
- 5) Initialization is complete
- 6) Stud finder can find wood or metal studs up to 3/4 in. (18-20 mm) deep behind standard interior drywall**

2. Stud Detection

- 1) Slide the device across the surface at a constant speed. The yellow LED glows and the device beeps, indicating it's approaching the wood stud
- 2) When the red LED glows with frequent beeps, it indicates the device has detected the wood stud's edge. Mark it
- 3) Keep sliding the device across, and the red LED goes out, which means the other edge of the stud is detected
- 4) Double check by sliding the device in the opposite direction to line up the marks
- 5) The midpoint of the two marks is the stud center

****FOR MORE SENSITIVE & ACCURATE DETECTION**

For more sensitive and accurate detection, place the device a few inches away from the surface. Then power on the device until the Green LED glows. Place the device on the surface and follow the steps above.

3. Level Measurement

- 1) Place the device horizontally on the marked surface, and make sure that the level bubble is horizontal.
- 2) If the bubble floats to either side, adjust the surface so that the bubble is positioned in the middle of the two black lines.
- 3) With all that done, the surface is leveled horizontally.

TECHNICAL PARAMETER

1. Power supply: four battery cells
2. Storage temperature : -20°C~50°C
3. Working temperature: 0°C~40°C
4. Working humidity: ≤95%
5. Detection distance:
 - A. Metal detection (object size not less than $\phi 15\text{mm} \times 50\text{mm}$)
 - a. Distance around 30 ~50 mm , According to various materials and object area response to change over distance . (Ex. Cu, Al, Fe, Steel ...etd.)
 - B. Stud detection (stud size 100mm \times 30 \times 30mm under woodblock or plasterboard).
 - a. Distance around 20mm

CAUTION:

Due to the environment or consistency and smoothness of the targeted surface, the accuracy of the detector may be affected. Under those circumstances, this device can only offer a referenced indication of the stud detection.

Thank you for purchasing a quality Rosewill Product.

Please register your product at : www.rosewill.com for complete warranty information and future support for your product.