

*Rosewill*<sup>®</sup>



**120 mm Dual Ring RGB Case Fans  
(3-Pack) and Hub Set**

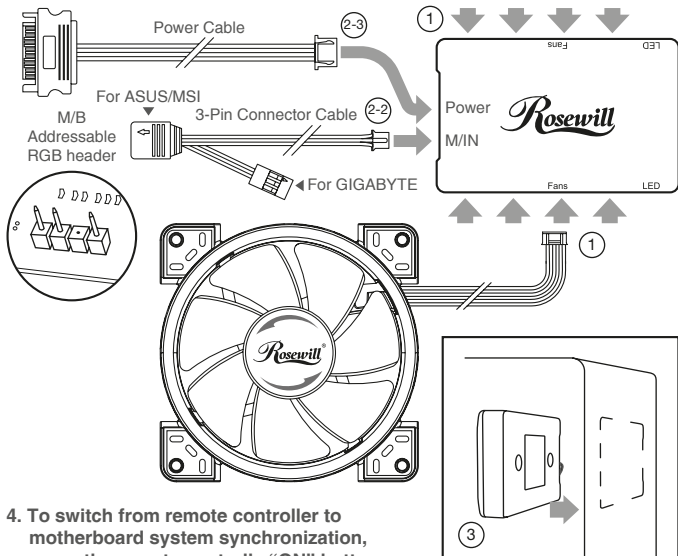
**RGBF-S12001**

---

**User Manual**

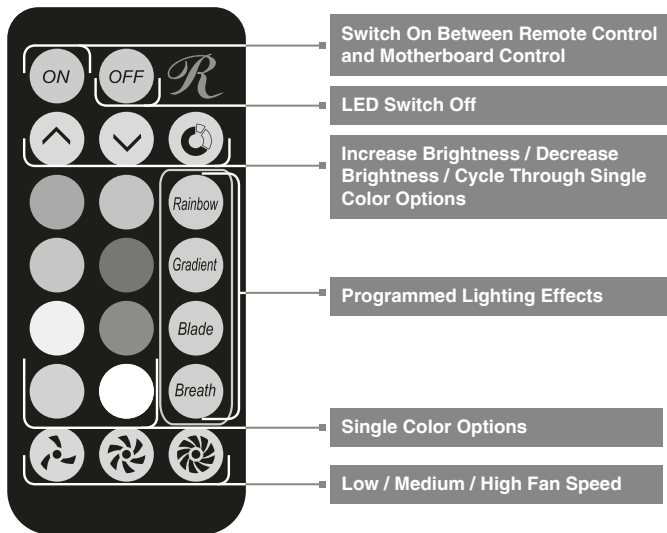
## Installation

1. Connect the fan cable into the RGB Fan Hub slots labeled “Fans” and attach fans with mounting screws in the system.
2. Connect the RGB Fan Hub.
  - 2-1 Turn your system off prior to installing the RGB Fan Hub.
  - 2-2 Plug the 3-pin connector to the addressable 5V\* RGB header of your motherboard and other end to M/IN on hub as another control option for system synchronization.
  - 2-3 Connect the power cable to the RGB Fan Hub and connect the other end to your power supply.
3. Mount the RGB Fan Hub to a desired location within the system via the attached magnet on the back of the RGB Fan Hub.



4. To switch from remote controller to motherboard system synchronization, press the remote control’s “ON” button. Press “ON” again to return back to remote control.

## Remote Controller Functions



## Package Contents

- 3 x 120 mm Dual Ring RGB Case Fans
- 1 x 8-Port RGB Fan Hub
- 1 x Remote Control
- 1 x SATA Power Cable
- 1 x 3-Pin Connector Cable
- 12 x Mounting Screws
- 1 x User Manual

## CAUTION

To avoid damage during installation, connect the case fans to the included fan hub only. Do not connect fans directly to any motherboard.

\*12V RGB headers are not supported



*Rosewill*® **Technical Support Information**  
techsupport@rosewill.com 1-800-575-9885

---

*Thank you for purchasing a quality Rosewill product.  
Please register your product at [www.rosewill.com](http://www.rosewill.com)  
for complete warranty information and support for your product.*