



USB 2.0 4 PORT HUB RHUB100

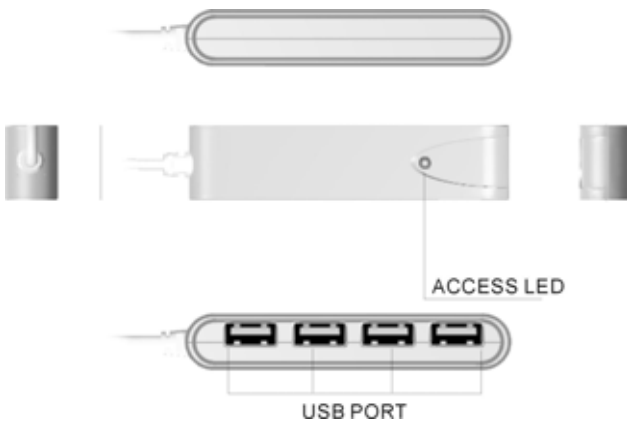
User Manual



Features

- Fully compliant with USB 2.0 and USB 1.1
- Specification Support transfer rate of 480Mbps、 12Mbps、 1.5Mbps
- Compliant with EHCI/UHCI/OHCI
- Plug & Play and Hot Swappable
- Self powered using Universal Serial Bus(USB)
- 1 LED indicators to indicate ACCESS
- Pocket size, Compact, Lightweight
- Low power consumption

Instruction of appearance



Specification

Speed	480/12/1.5 Mbps	LED	1
Compliant	USB Spec.2.0 / 1.1	Power Mode	Bus
Connector Downstream	USB Type A Female X 4	Cable Length	10cm
Dimension (L x W x H)	90x21x14.5mm		

Op. temperature: 0 to 70 .

Weight:34 g

System Requirement

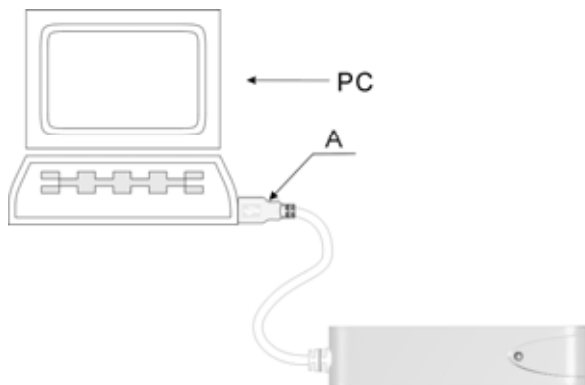
- Pentium II 300MHZ(or higher) including USB 1.1 or USB 2.0 Port
- Windows 98Se/Windows 2000/Windows Me/Windows XP/
- Mac OS X
- Above CD ROM 24x

Attention

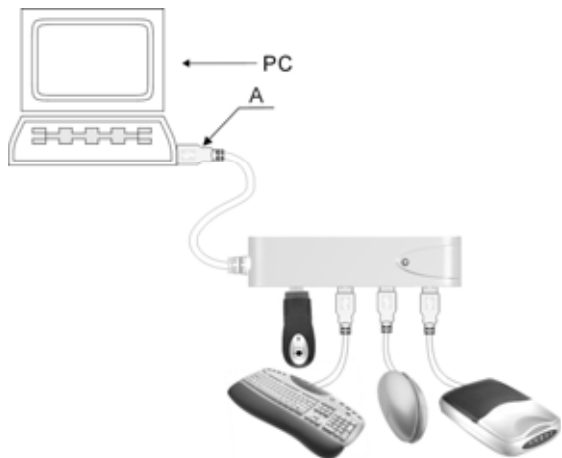
1. Please do not put the unit in direct sunlight or next to devices with high electrical current.
2. Please do not disassemble and attempt to repair the USB 2.0 HUB. Please contact the retailer in case assistance is required.

Hardware Connection Guide

1. Please plug USB cable connector A to USB port on Laptop/ PC first.



2. The USB 2.0 HUB will work well after you follow above connection guide



Thank you for purchasing a quality Rosewill Product.

Please register your product at : www.rosewill.com for complete warranty information and future support for your product.