

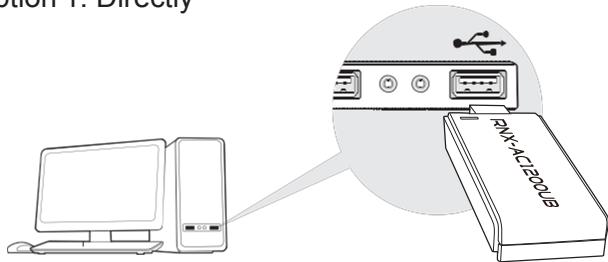
RNX-AC1200UB

Quick Installation Guide

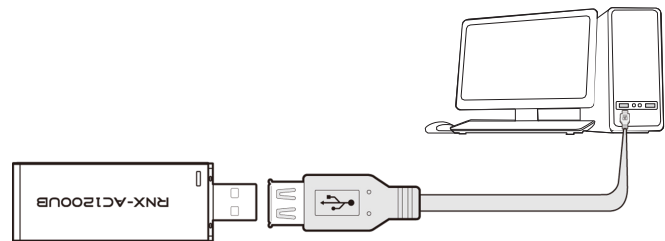
AC1200 Wireless Dual Band USB Adapter

1 Connect to a Computer

Option 1: Directly



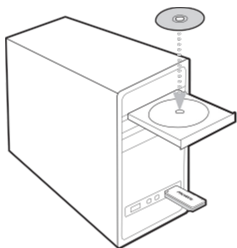
Option 2: Via the USB Extension Cable



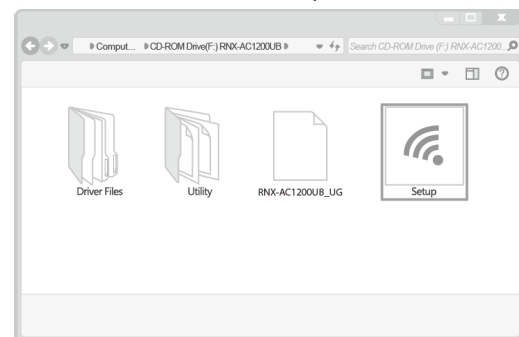
Note: In Windows XP, a Found New Hardware Wizard window will appear when the adapter is detected. Please click Cancel.

2 Install Driver and Utility

A: Insert the CD into the CD-ROM drive and open it from My Computer.



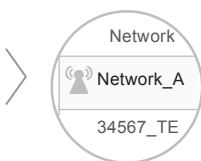
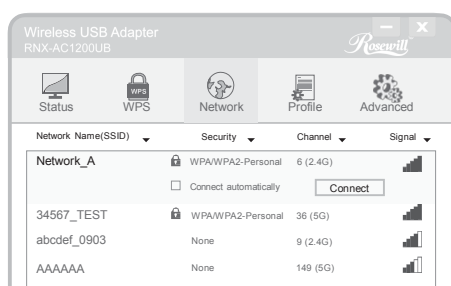
B: Select CD-ROM RNX-AC1200UB and double-click Setup.exe, and then follow the InstallShield Wizard to complete the installation.



3 Join a Wireless Network

Option 1: Via the Wireless Configuration Utility

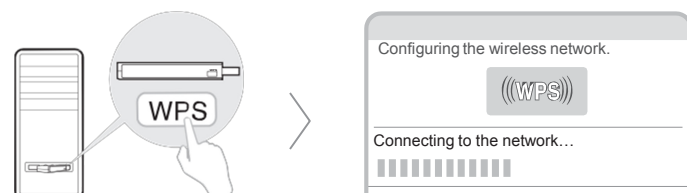
Select your preferred wireless network from the pop-up utility window and click Connect. The symbol  indicates a successful connection.



Option 2: Via Wi-Fi Protected Setup (WPS)

A: Press the WPS button on your router.

B: Within 2 minutes, press and hold the WPS button on the adapter until the following screen appears.



C: When you are prompted "Successfully connected to the network by WPS!", click OK.

Option 3: Via Windows Wireless Utility

With the Wireless Configuration Utility closed, you can use the Windows built-in Wireless Utility to join a wireless network.