

Quick Installation Guide

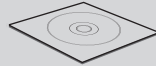
N150 Wireless Nano USB Adapter

MODEL NO. RNX-N150NUB

Package Contents



RNX-N150NUB



Resource CD

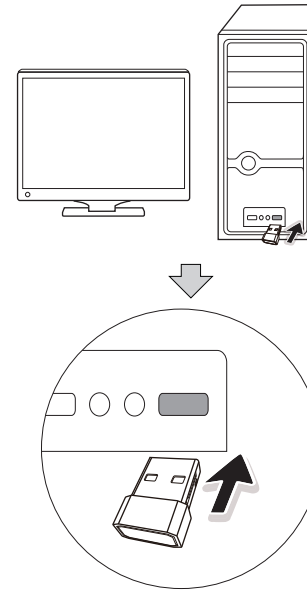


QIG

System Requirement

· Windows XP · Windows Vista · Windows 7 · Windows 8

1 Hardware Connection



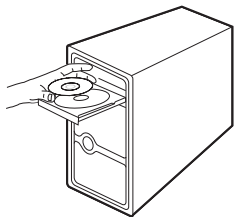
You may see the **Found New Hardware Wizard** after the adapter has been inserted. Please click **Cancel**.



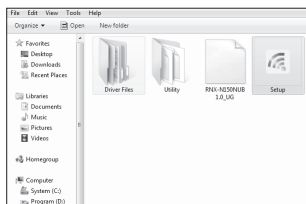
2 Software Installation

(The installation procedures in Windows XP/ Vista/ 7/ 8 are similar. Here we use the procedures in Windows 7 as an example.)

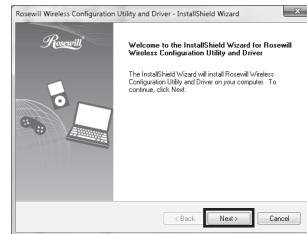
- 1 Insert the Rosewill Resource CD into the CD-ROM drive.



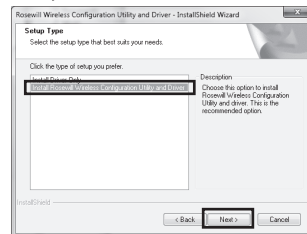
- 2 Browse the Resource CD and click **Setup**.



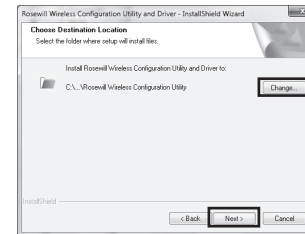
- 3 The **InstallShield Wizard** window will appear. Click **Next** to continue.



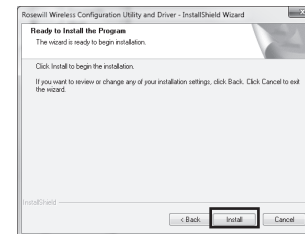
- 4 Select **Install Rosewill Wireless Configuration Utility and Driver**, and then click **Next**.



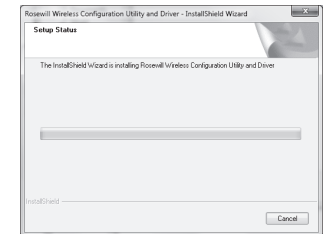
- 5 Click **Change...** to specify the destination location or you can leave it default. Click **Next** to continue.



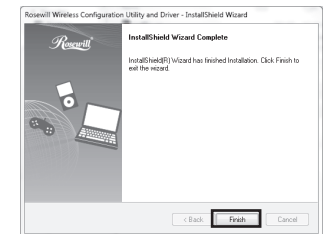
- 6 Click **Install** to install the driver and utility for your adapter.



- 7 The installation process may take 1-2 minutes.



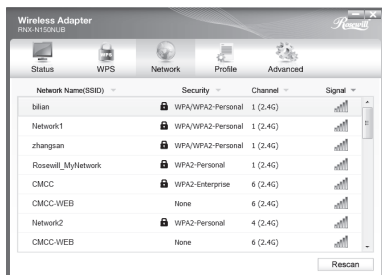
- 8 The following screen will then appear. Click **Finish** to complete the setup.



3 Connect to Network

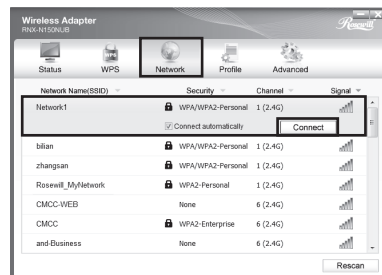
(You can skip to **Appendix: Connect to Wireless Router by WPS** to quickly connect to a network if your Router or Access Point features WPS/QSS function.)

1 After installation, the configuration page will pop up on your desktop.



Note The icon will appear on your desktop. Double-clicking on the icon can start the utility.

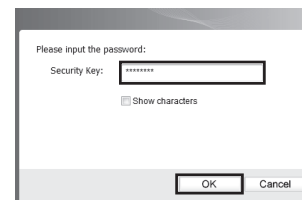
2 Click **Network** in the tools section to display a list of available wireless networks. Highlight the target network name (e.g. Network1) and then click **Connect** to build a connection.



Note Here we only choose a wireless network with the security type of **WPA/WPA2-Personal** as an example to elaborate the following steps. If you want to know more about the connection to a wireless network with the security type of **WPA/WPA2-Enterprise**, please refer to the User Guide on the resource CD included.

3 If the network is unsecured, you will directly connect to it. If it is secured (with WPA/WPA2-PSK), there are two ways to connect to it.

Method One:
Input the wireless password into the **Security Key** field and then click **OK** to continue.



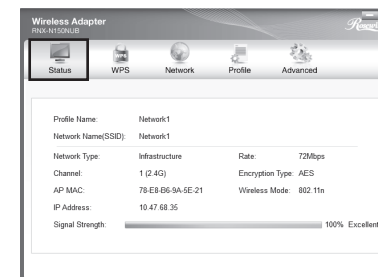
Method Two:
Without entering a key, push the WPS/QSS button on your Router as hinted "You can also connect by pushing the button on the router". Then click **OK** to continue.



4 The following screen indicates successful connectivity. Click **Close** to enjoy the Internet.



5 To view more information about the network connected, click **Status** in the tools section.

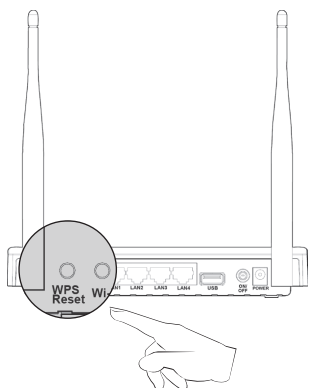


Appendix: Connect to Wireless Router by WPS

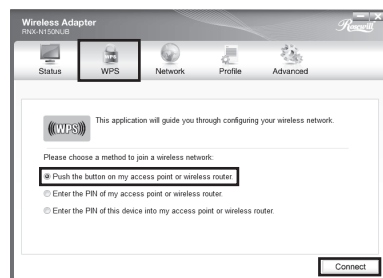
If your wireless Router features the WPS/QSS function, you can also set up a wireless connection in this way.

Note For more configuration methods of WPS, please refer to the User Guide on the Resource CD.

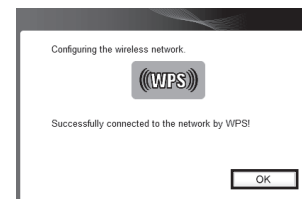
1 Push the **WPS/RESET** button on the Router. (Here we use a router as an example.)



2 Launch the configuration utility and click **WPS** in the tools section. Select **Push the button on my access point or wireless router** and then click **Connect**.



3 Wait for the connection process to complete. The following screen indicates successful connectivity. Click **OK** to finish the WPS connection.



Thank you for purchasing a High-Quality Rosewill Product.

To download the latest software and user guide, please visit Rosewill official website at www.rosewill.com. If you have any question while using our products, feel free to contact us.
Support Phone Number: 800-575-9885
Support Email: techsupport@rosewill.com