



Wireless N PCI Adapter RNX-N250PC2
Quick Installation Guide

The Quick Installation Guide will help you to install RNX-N250PC2 300M Wireless N PCI Adapter in Windows XP/ Vista/ 7, including basic hardware and software installation, as well as configuration of wireless network availability. For detailed instructions, please refer to the User Guide in the Resource CD.

A. Hardware Installation

1. Turn off your computer and unplug the power cord from the computer.
2. Open the case. Locate an available PCI slot and remove its slot cover. Keep the screw.
3. Insert the adapter into the PCI slot.
4. Secure the adapter with the screw removed in Step 2.
5. Close the case and insert the power cord back into the computer.
6. Turn on your computer.

You may see the **Found New Hardware Wizard** after the adapter has been inserted. Please click **Cancel**.

B. Software Installation

The installation procedures in Windows XP/ Vista/ 7 are similar. Here takes the procedures in Windows XP for example.

1. Insert the Resource CD into your CD-ROM drive, and open the folder named RNX-N250PC2. Double-click **Setup.exe** to start the installation, and then the following screen for preparing setup will appear.

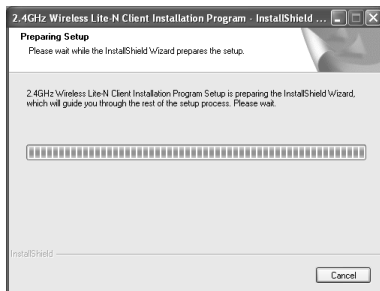



Figure 1

2. Follow the InstallShield Wizard to complete the installation.



Note:


- 1) If Windows XP warns about Windows Logo testing, click **Continue Anyway** to continue the installation.
- 2) After the installation,  will appear at the bottom of the screen in your system tray. Otherwise, there may be some problems about the installation, please check it seriously.

C. Connect to a Wireless Network

a. To connect using Wireless N Client Utility

Wireless N Client Utility is available in Windows XP/ Vista/ 7, and the way to use it is similar, here takes Windows XP for example.

The Adapter's tray icon  shows the signal strength using color and the received signal strength indication (RSSI). If the icon is blue, a wireless connection has been established. If the icon is , there is no connection. Follow the steps below to launch a wireless connection manually.

1. Double-click the icon , then the Wireless N Client Utility will appear, you can also run the utility by clicking **Start→All programs→Rosewill→2.4GHz**

Wireless Lite-N Client Utility. Then the utility configuration page will pop up on the screen. (Figure 2).

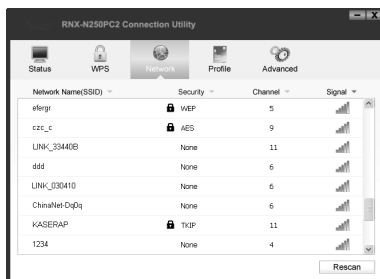


Figure 2

- The **Network** page will display all wireless networks that are available in your area. To connect to a network, simply highlight the wireless network name and click **Connect**.

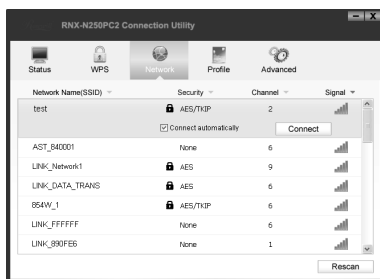


Figure 3

- If word **None** appears behind the SSID, this means the network to be connected is not security-enabled and you can connect to the network without entering a key.

If there is a “lock” icon behind the SSID, this means the wireless network is secured. There are two ways to connect to it.

Method One: Input the security key into the field beside **Security Key** and click **OK** to continue.

Method Two: Without entering a key, push the WPS (other brands may call it QSS) button on your router if prompted to **You can also connect by pushing the button on the router** as shown below. Then click **OK** to continue.



Figure 4

b. To connect using WPS

1. Push the WPS/QSS button on the back panel of the Router.
2. Launch the config utility and click **WPS** in the tools section. Select **Push the button on my access point or wireless router** and then click **Connect**.

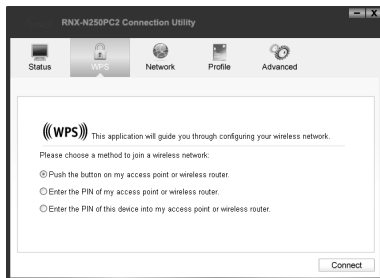


Figure 5

3. Wait for the connection progress to be completed. The following screen indicates successful connectivity. Click **OK** to finish the WPS connection.

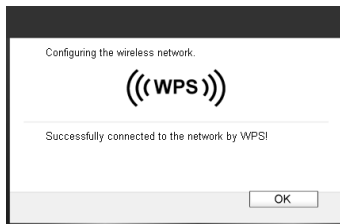


Figure 6

Note:

For more configuration methods of WPS, please refer to the User Guide on the Resource CD.

c. To connect using Windows built-in wireless utility

Here takes Windows XP for example.

1. Right-click on the utility icon in your system tray (lower-right corner). Select **Switch to Windows wireless configuration tool**.



Figure 7

Or double-click the utility icon to load the utility configuration page. Click **Advanced** in the tools section and then select **Use Windows wireless configuration tool**.

2. Right-click on the wireless computer icon in your system tray (lower-right corner). Select **View Available Wireless Networks**.



Figure 8

- The utility will display any available wireless networks in your area. Click on a network (displayed using the SSID) and click the **Connect** button.

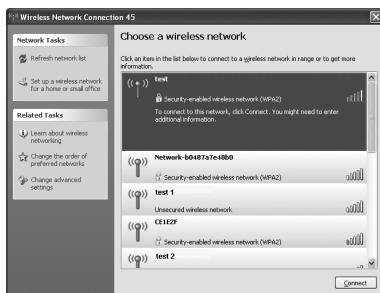


Figure 9

- If the network is security-enabled, you will be prompted to enter the key as shown below. If not, you will connect to the network directly without entering a key.

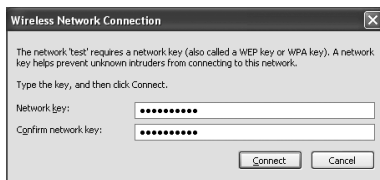


Figure 10

The three methods above are all available; you can use any one of them to join the Internet.

Thank you for purchasing a quality Rosewill Product.

Please register your product at: www.rosewill.com for complete warranty information and future support for your product