

# RX307-PU3-35B

3.5" SATA HDD Enclosure

## User Manual



EN

### Please Read and Save This User Guide

Please thoroughly read this manual before setting up your unit. Failure to comply with the requirements and instructions could cause personal injury and/or property damage.

### I. System Requirements

- Computer Hardware: PC, Notebook, or Mac with USB 3.0 port
- Operation System: Windows XP/Vista/7/8; Mac OS 10.8+
- Power Source: AC wall jack

### II. Key Features

- 3.5" SATA III HDD
- USB 3.0 interface
- USB 3.0 super speed transfer rate up to 5 Gb/sec
- USB 2.0 high speed transfer rate up to 480 Mb/sec
- Backward compatible SATA and USB
- Plug & Play / Hot Swap
- Energy-Saving Design : auto stop with PC shutdown and sleep or USB disconnect

### III. Package Contents

- HDD Enclosure x 1
- HDD Enclosure Stand x 1
- 12V Power Supply x 1
- USB 3.0 Cable x 1
- User Manual x 1

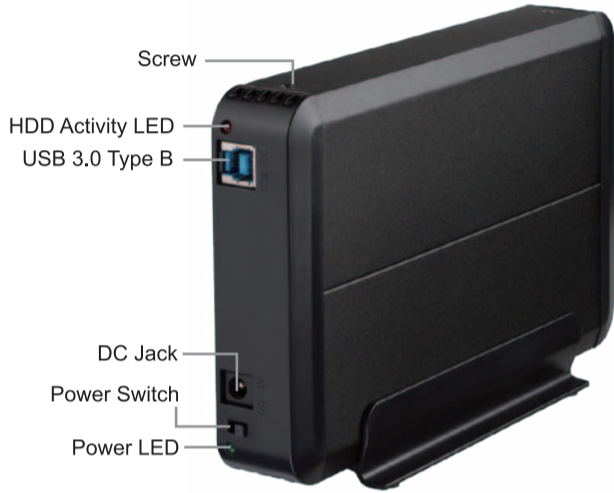
1.

2.

### IV. Enclosure Details

Refer to Figure 1 for the details of the HDD enclosure.

Figure 1



3.

### V. Enclosure Instructions

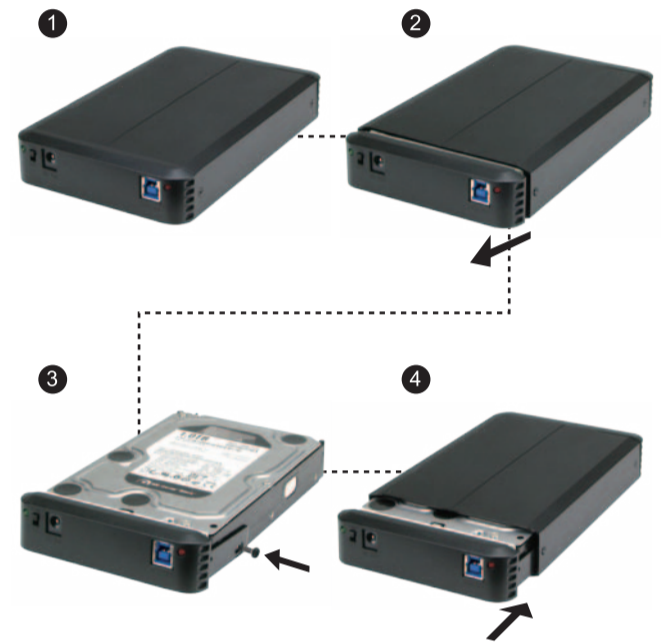
To install a SATA HDD, follow these steps (Figure 2).

1. Remove the screws from the side panel (#2).
2. Carefully slide out the control panel.
3. Connect the HDD to the PCB board on the back of the panel (#3).
4. Secure the clasps on each side of the HDD with a screw (#3).
5. Slide the HDD inside the enclosure, and firmly secure it against the back of the case (#4).
6. Replace the screws in the side panels (#4).

**Warning:** Make sure the enclosure is secure and safe so it will not be accidentally bumped. Don't move the dock when it is in use because data and HDD damage can occur.

4.

Figure 2



5.

### V. Installing Drivers

Windows XP/Vista/7/8 and Mac OS 10.8+ will automatically detect the setup.

The setup icon will appear on your system toolbar.

### VI. Removing the Enclosure

**Warning:** To ensure a safe removal, you must correctly disconnect the USB device from your computer.

Before removing the USB cable:

1. Right-click on the [USB/Storage] device icon on the lower right corner of your taskbar.

A [Safely Remove Hardware] message will appear.

2. Click on [STOP] or [EJECT].

It is now safe to remove the USB cable.

It is now safe to remove the AC/DC wall cable.

6.

### IX. Formatting a New HDD

If you are using a new HDD for the first time, you will need to format (partition) it before use.

#### Pre-Win 8 users:

- 1) Right-click on [My Computer].

- 2) Select [Manager].

A window will open to a Computer Manager screen.

- 3) Click [Disk Management].

A window will display under the System devices confirming a "New Hard Disk Drive."

- 4) Continue with the instructions that prompt you on your computer screen.

7.

For **Windows 8 users**, follow these steps.

- 1) Find and click the [Control Panel].

The Control Panel window will open.

- 2) Click [System and Security].

- 3) Find and click the section [Create and format hard disk partitions].

- 4) Continue with any further instructions.

After the information on your new disk is shown and you can see it in the computer file tree, your new HDD is ready to use!

8.

### Disclaimer

All the information in this document is subject to change without prior notice. The manufacturer makes no representations or any warranties regarding the contents of this manual. The information contained in this manual is provided for the general use by the customers. No part of this document may be reproduced or transmitted in any form by any means without the expressly written permission of the manufacturer. All brand Names used in this document are trademarks or registered trademarks of their respective holders.

9.

### Specifications

#### 3.5" SATA HDD Enclosure

Part Number	17-182-347
Model	RX307-PU3-35B
Dimensions	6.97 x 4.33 x 1.22 inch 177 x 110 x 31 mm
Storage / Size	3.5" SATA III HDD
Speed	USB 3.0: 5 Gb/sec USB 2.0: 480 Mb/sec
Voltage	12V/2A
Power	DC/USB
Weight	0.66 lb
Color	Black
Material / Finish	Aluminum / Plastic
Cord Connector Interface	DC plug-outlet / USB 3.0 B-A
Windows OS	XP/Vista/7/8
Mac OS	10.8+
Plug & Play	Yes

10.



**Rosewill Technical Support information**  
1-800-575-9885 Monday - Friday 8AM - 5PM PST  
techsupport@rosewill.com

Thank you for purchasing a quality Rosewill Product. Please register your product at : [www.rosewill.com](http://www.rosewill.com) for complete warranty information and future support for your product.

EN

EN

EN

EN

EN

EN

EN

EN

EN

EN