



Backlit Gaming Keyboard with 10 Macro Keys RK-8200
User Manual

Thank you for your purchase of our Gaming Keyboard. For your own safety and convenience, please read this manual thoroughly before using this product. After you have read this manual, please keep it in a place for reference when necessary.

Contents in the package

These following items are included in the package. Please make sure all items are complete when open the package at first time. If there is any item missing or damaged, please contact the reseller where the product was purchased or our support center.

- RK-8200 Gaming Keyboard x 1
- Installation CD x 1
- Manual x 1
- 7 PCS Swap Gaming Keycap.
- Keycap Puller.

Attention

Any malfunction, damage or personal injury caused by the malfunctioning or damage of the user's personal computer or misuse of this product. Any attempt to dismantle, change or modify this product in any manner.

Warning

Please do not use this product in ashy, wet, or oily environment(s). Failure to do so may shorten the life of this product and may cause bodily harm.

Please keep this product away from radio frequency interruption area(s).

This is not an outdoor product. This product is not for outdoor use. Exposing the product outdoors may cause damage to it.

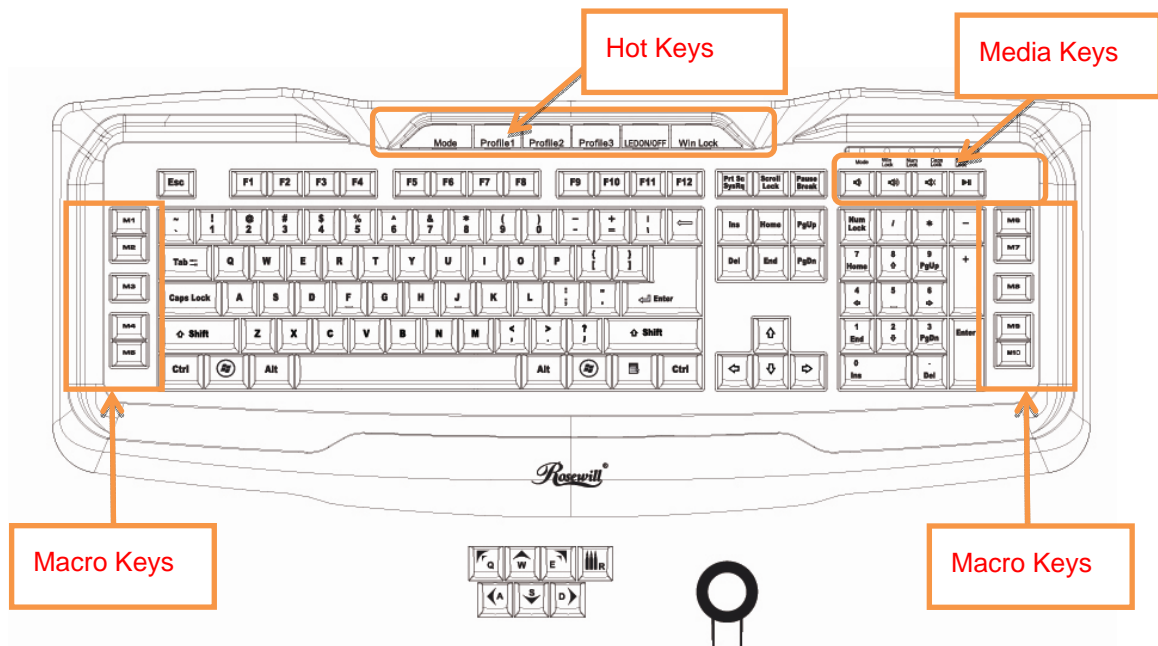
Please do not use alcohol, petroleum, benzene or thinner-based solutions to clean this product. We recommend wiping this product with a damp cloth.

Warranty Information

This product is backed by a One-Year Manufacturer's Warranty, starting from the date of purchase. The warranty covers for free repair in accordance with the contents stated herein but does not cover wear and tear and any malfunction or damages as results of improper usage as stated in this manual.

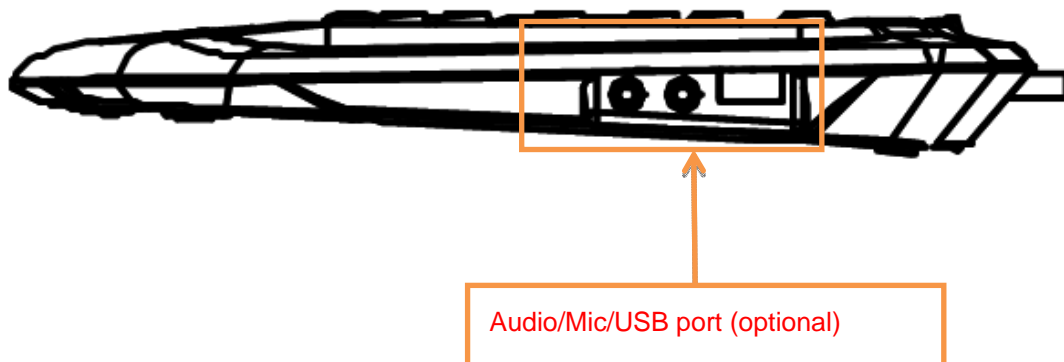
Product Appearance

Front View

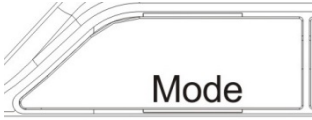






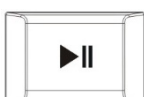


Replaceable Keys and Key Cap Remover

Side View



Hot Key Functions

Icons	Functions	Descriptions
	Mode	Switch to Gaming mode
	Profile	Switch to Macro Profile setting
	LED ON/OFF	Turn on back light
	Windows Lock	Lock the Windows " Start " Hotkey
	Volume Down	Decrease the Volume Level
	Volume up	Increase the Volume Level
	Mute	Mute the Volume
	Play and Pause	Play and Pause the Media Player

Product Features

- The Keyboard is designed for on-line game players and PC game users.
- Ergonomic palm rest with leather wrapping for a comfortable touch
- Ideally spaced hot-keys increase productivity and speed.
- One Hot Key of locking "Windows Key" for users to play game without operating error
- 4 Multimedia hot keys
- 3 sets 10 Macro keys allow game user to set any key code easily.

- Support delay time setting. Allow users to do multi-actions in game.
- Equipped with replaceable colorful QWERTASD Gaming function keys with a key cap remover
- Backlight Blue LED Key Module -The basic model will be designed with an On/ Off button to turn on/ off blue LED backlight to control backlight ambience.
- On Screen Display (OSD) function - A vary of information can be displayed with On Screen Display function bases on user selection.
- Audio & Mic jack, one USB hub (optional).

Product Specification

Dimensions	543 x 223.9 x 30mm
Weight	1000± 20g
Key number	122 Key for US Version (By Language)
Hot Key	20 (Including Windows Hotkeys and Marco Keys)
Cable Length	1.7meter
Interface	USB
Links	USB Hub and Audio Ports (Optional)
Keystroke Life	5 Millions
Key Switch Type	Membrane
Key Operating Force	55±8g
Power Consumption	DC 5V ± 5%, 400mA max
Safety Approval	FCC Class B, CE, BSMI
Operation System	Windows 2000 / XP / XP x64 / Vista x86 x64 /7 x86 x64
Accessory	Replaceable Colorful QWERTASD Gaming Function Keys with a Key Cap Remover

Installing the Software

1. System Requirement:

- Have USB port on PC.
- Windows 7/Windows7 64/Vista/Vista 64/ XP/XP64.
- CD/ DVD-Rom Drive.
- 35 MB free hard disk space.

2. Install Software

3-1. Software installation step

- Step1: Plug keyboard's USB Cable into PC's USB port.
- Step2: Please place software CD into CD or DVD ROM Drive.
- Step3: System will automatically install, if the autorun function doesn't activate, please click "setup.exe" to install driver.
- Step4: Please follow the screen display step to install.
- Step5: After the installation, please click finish button to complete. The system may need to be rebooted after the installation.

3-2. Uninstall

- Step1: Open control panel.
- Step 2: Select "Add/Remove Program."
- Step 3: From program list to remove, please select gaming keyboard program.
- Step 4: Click "remove" and system will uninstall this program.

3. Operation Explain

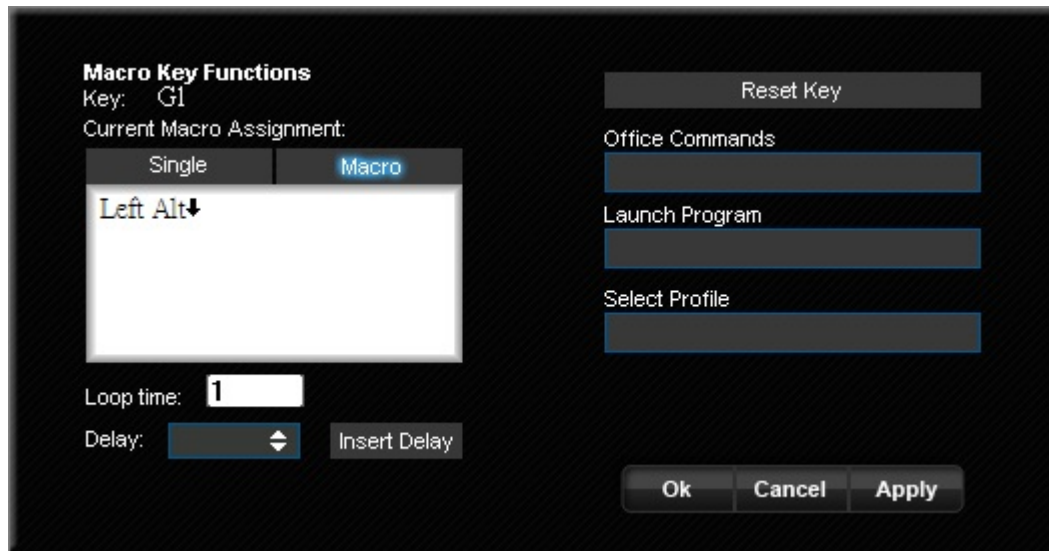
The features listed here require the gaming keyboard software driver to be installed and the gaming keyboard Tray Icon will be activated. Each setting will be saved to the current Profile on the keyboard.



Function List Below

Macro key functions

User can set M1~M10 button to Macro function. When click macro of function key, then keyboard will send macro key to game.



Macro Assignment:

Enter your macro or single key in the new Macro Assignment box. You can also choose to insert a delay time. Macro can be up to 64 keystrokes.

Office commands

You can set some office command to this key. Ex (Copy, paste, print)

Launch Program

You can set exe or website link to this button.

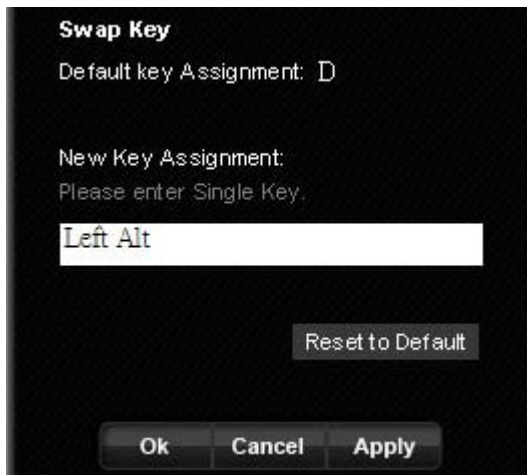
Select Profile

You can set this key to switch profile function.

Reset key

Click this button can reset key mapping into default setting.

Swap Key Setting

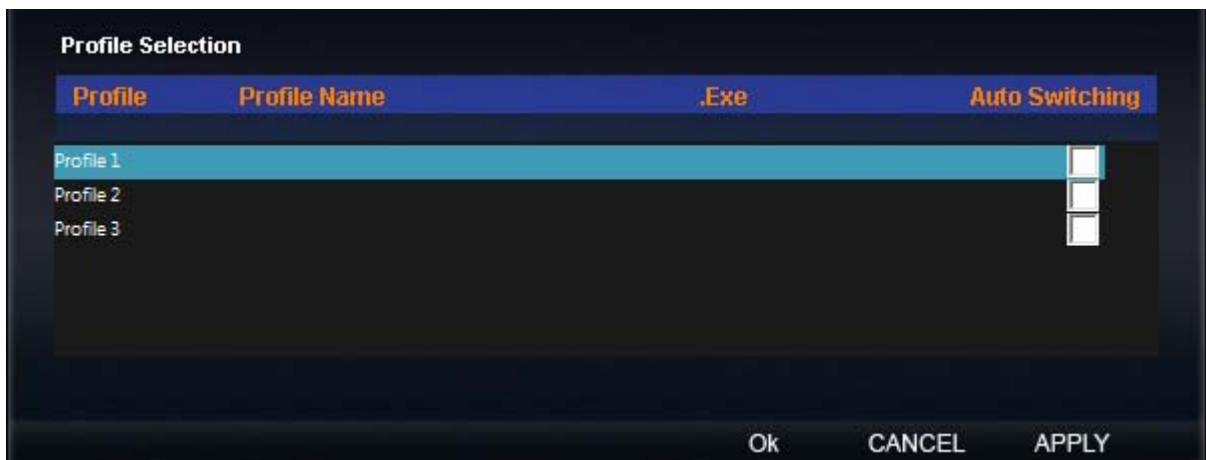


Standard key swap function

To enter a single key to this box then click apply button will swap this key function. All standard key code can be assigned to specific key code. For example; user can assign "Q" as "A." After completing the setting, user presses "Q" key, and keyboard will send "A" key code to PC. The button will be highlighted green color on the key map you have selected.

NOTE: If users want to reset the swapped key to default setting, Please launch the driver's GUI and choose the single key which you want to set. Click "Reset to Default" key and the value will return to original factory setting.

Auto Switch Profile



Auto profile can be set to be automatically launched while the selected application is activate.

FCC Statement on CLASS B

This equipment has been tested and found to comply with the limits for a Class B digital device, pursuant to part 15 of the FCC Rules. These limits are designed to provide reasonable protection against harmful interference in a residential installation. This equipment generates uses and can radiate radio frequency energy and, if not installed and used in accordance with the instructions, may cause harmful interference to radio communications. However, there is no guarantee that interference will not occur in a particular installation. If this equipment does cause harmful interference to radio or television reception, which can be determined by turning the equipment off and on, the user is encouraged to try to correct the interference by one or more of the following measures:

- Reorient or relocate the receiving antenna.
- Increase the separation between the equipment and receiver.
- Connect the equipment into an outlet on a circuit different from that to which the receiver is connected.
- Consult the dealer or an experienced radio / TV technician for help.

Caution

As shielded-type power cord is required in order to meet FCC emission limits and also to prevent interference to the nearby radio and television reception. It is essential that only the supplied power cord be used.

Use only shielded cables to connect I/O devices to this equipment.

You are cautioned that changes or modifications not expressly approved by the party responsible for compliance could void your authority to operate the equipment.

All brand names, trademarks and logos are the properties of their respective owners.

Thank you for purchasing a quality Rosewill Product.

Please register your product at : www.rosewill.com for complete warranty information and future support for your product.