



Smart Digital Film Scanner

Thank you for purchasing a quality Rosewill Product.
Please register your product at : www.rosewill.com for complete warranty information and future support for your product.

Table of Contents

1.	Precaution	2
2.	Preparation.....	5
	● Standard Accessories	5
	● Part Names.....	6
3.	Install the Software.....	7
	● Installing the Software in Windows.....	7
	● Installing the Software in Mac.....	8
4.	Place Film / Slide Into The Holder.....	9
5.	Connecting the Smart Digital Film Scanner	10
6.	Acquire Picture	11
	● Acquire Picture from Windows	11
	● Acquire Picture from Mac	15
7.	Edit The Pictures	19
	● Adjust.....	19
	● Retouch	23
	● Clipboard	25
7.	Appendix	26
	● Specifications.....	26
	● System Requirements	27

Welcome

Thank you for purchasing a Smart Digital Film Scanner. Please take a moment to read through this manual. Its contents will send you on an educational journey into your recorder multiple capabilities.

1. Precaution

Before using Smart Digital Film Scanner, please ensure that you read and understand the safety precautions described below. Always ensure that the Smart Digital Film Scanner is operated correctly.

- Never operate Smart Digital Film Scanner inside of an aircraft or anywhere else where operation of such devices is restricted. Improper use creates the risk of serious accident.
- Do not try to open the case of Smart Digital Film Scanner or attempt to modify Smart Digital Film Scanner in any way. High-voltage internal components create the risk of electric shock when exposed. Maintenance and repairs should be performed only by authorized service providers.
- Keep Smart Digital Film Scanner away from water and other liquids. Do not use Smart Digital Film Scanner with wet hands. Never use Smart Digital Film Scanner in the rain or snow. Moisture creates the danger of fire and electric shock.
- Keep Smart Digital Film Scanner and its accessories out of the reach of children and animals to prevent accidents or damage to the Smart Digital Film Scanner.

If you notice smoke or a strange odor coming from Smart Digital Film Scanner, turn the power off immediately. Take Smart Digital Film Scanner to the nearest authorized service center for repair. Never attempt to repair Smart Digital Film Scanner on your own.

- Use only the recommended power accessories. Use of power sources not expressly recommended for Smart Digital Film Scanner may lead to overheating, distortion of the equipment, fire, electrical shock or other hazards.
- Smart Digital Film Scanner may become slightly warm during use. This does not indicate malfunction.
- If the exterior of Smart Digital Film Scanner needs cleaning, wipe it with a soft, dry cloth.

FCC Notice

This equipment has been tested and found to comply with the limits for a Class B digital device, pursuant to Part 15 of the FCC Rules. These limits are designed to provide reasonable protection against harmful interference in a residential installation. This equipment generates, uses and can radiate radio frequency energy. If not installed and used in accordance with the instruction, it may cause harmful interference to radio communication. However, there is no guarantee that interference will not occur in a particular installation. If this equipment does cause harmful interference to radio or television reception, which can be determined by turning the equipment on the off, the user is encouraged to try to correct the interference by one or more the following suggestion.

- Reorient or relocate the receiving antenna.
- Increase the distance between the equipment and the receiver.
- Connect the equipment to a different power outlet other than the one where the receiver is connected.
- Consult an experienced television or radio technician for help.

CAUTION

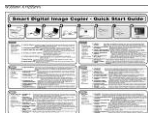
To comply with the limits for a Class B digital device, pursuant to Part 15 of the FCC Rules, this device must only be installed on computer equipment certified to comply with the Class B limits.

2. Preparation

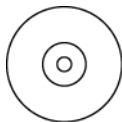
Standard Accessories



Smart Digital Film
Scanner



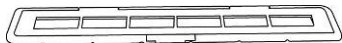
Quick Guide



CD



Slide Holder

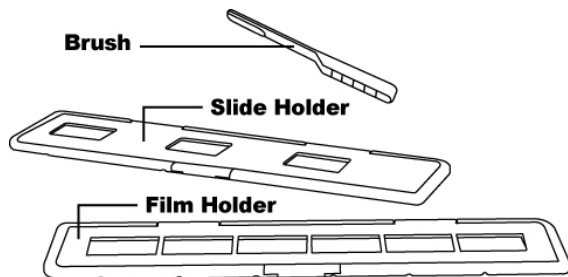
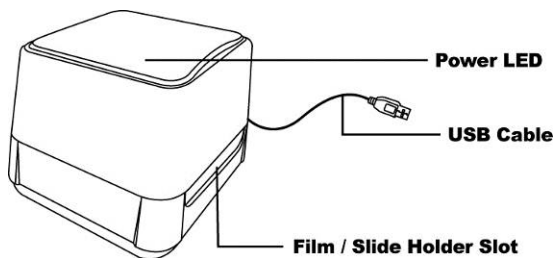


Negative Holder



Clean Brush

Part Names



(Optional)

Note: We strongly suggest using a clean, dry, non-alcohol cotton swab to insert into the Smart Digital Film Scanner slot and clean the glass surface periodically to produce a clear image. Please make sure your film negatives/ mounted slides and cover trays are clean before inserting into the Smart Digital Film Scanner as well. Dust or dirt from the negatives and cover trays will affect the quality of your scanned images.

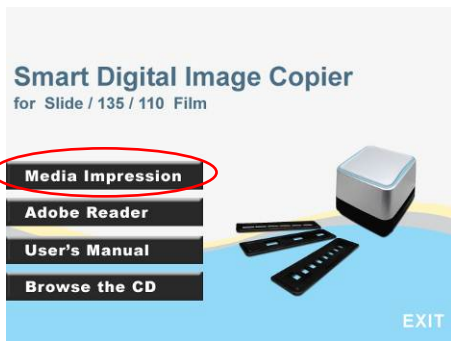
3. Install the Software

This scanner is supported by Microsoft UVC (Universal Video Class) and Plug & Play technology, therefore, does not need separate driver software.

To use the photo scanner you must install ArcSoft MediaImpression in advance.

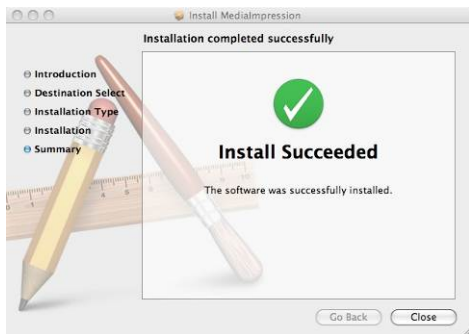
Installing the Software in Windows

1. Insert the installation CD into the CD-ROM drive and the installation CD menu should appear.
2. When you see the following screen, choose “**MediaImpression**” to install the software.
3. Follow the on-screen instructions.
4. The installed software will automatically create a **MediaImpression** logo on your desktop.
5. Restart the computer.



Installing the Software in Mac

1. Insert the installation CD into the CD-ROM drive and click CD icon.
2. Click "MediaImpression Installer"
3. Follow the on-screen instructions.



4. Place Film/ Slide Into The Holder

1. Open the negative/ positive slide holder as Illustrated.



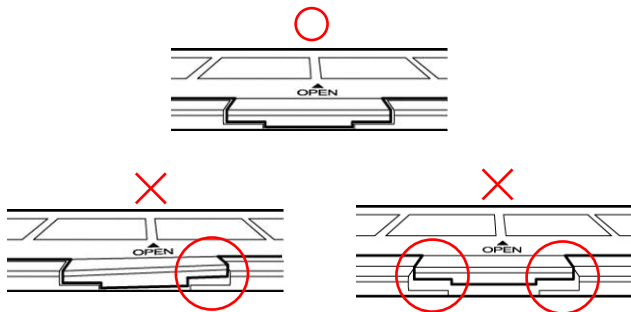
2. Put a negative film / positive slide film into holder as shown.



3. Close the holder and please make sure the holder close properly.



Note: Make sure the Film / Slide holder has closed completely before insert it into the Smart Digital Film Scanner.



5. Connecting the Smart Digital Film Scanner

1. Plug the USB cable of Image Copier into your computer's USB 2.0 port. Once connected the Power LED light will turn on.
2. Insert the loaded film / slide holder properly into the slot according to the triangular signs as shown.

**IMPORTANT: INSERTING HOLDERS INCORRECTLY
MAY DAMAGE YOUR IMAGE COPIER.**



You can adjust the location of the film by moving the film holder; the film holder can be moved in both directions.



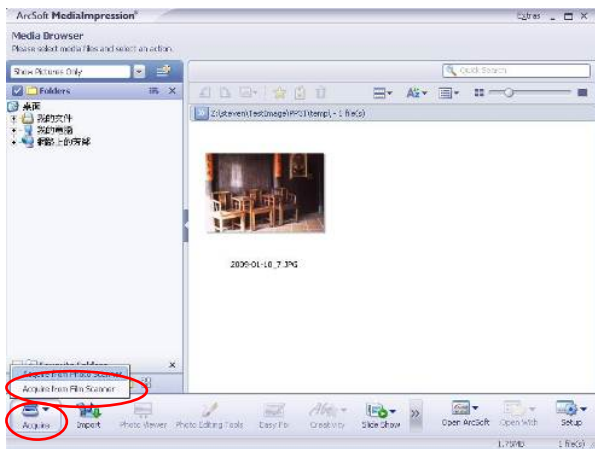
6. Acquire Picture

Acquire Picture from Windows

1. Click on the MediaImpression icon on the desktop and you will see the following.

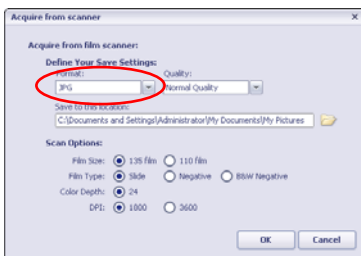


2. Click "Get Photo" and choose "Acquire". Select "Acquire from Film Scanner".

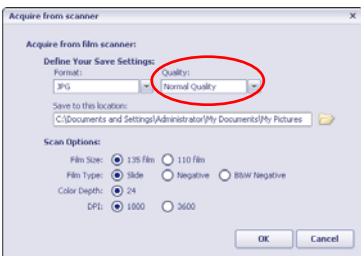


3. Define your save settings:

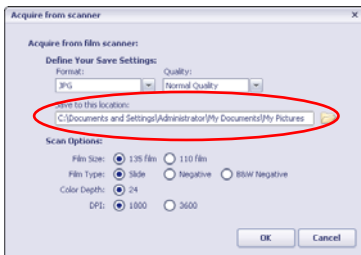
a) There are two formats JPG or TIF for setting.



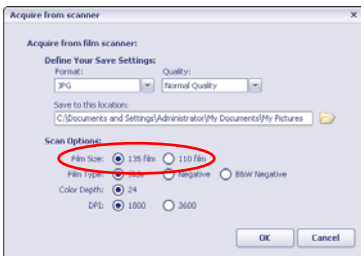
b) There are four quality levels (Highest/ High/ Normal/ Low) for selection in JPG format.



c) Select the location to save your image.

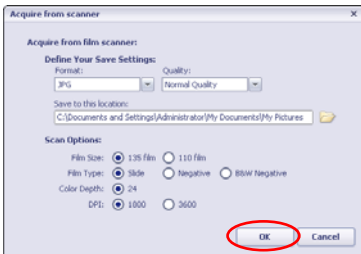


- d) There are two film size 135 film (software default) and 110 film to choose from. You are suggested to select 135 film, most users do not have 110 film. (110 Film Holder is an optional part.)



- e) Select the film type you are going to scan.

- f) Click "OK".



4. Capturing images

You will see the image to be captured in the live view window, move the holder to avoid dark edge of the holder appears in the live view window, the dark edge will be captured if it appears. If the dark edge is on top or bottom when taking slide image, tilt the device left or right will help to locate the image correctly.

Click "Capture" to save image to your computer.



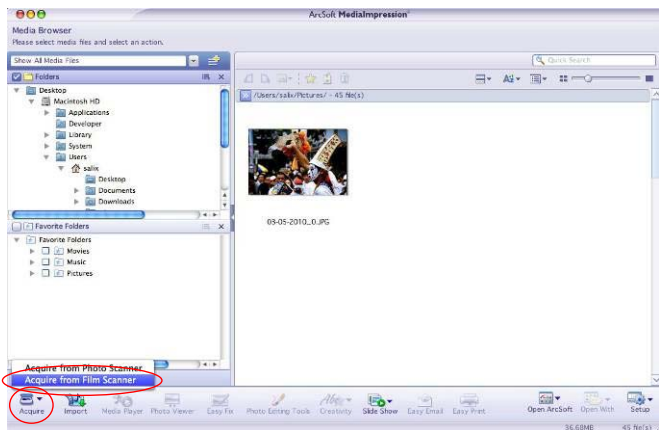
5. Moving the film holder and press "Capture" for next film scan.

Acquire Picture from Mac

1. Click on the MediaImpression icon on the desktop and you will see the following.



2. Click “Acquire”.
Select “Acquire from Film Scanner”.

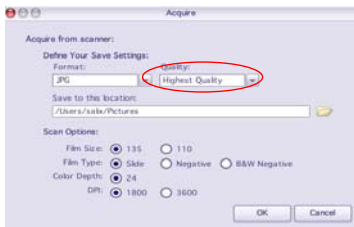


3. Define your save as settings:

a) There are two formats JPG or TIF for setting.



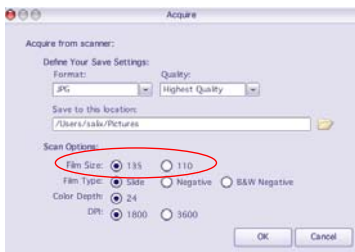
b) There are four quality levels (Highest/ High/ Normal/ Low) for selection in JPG format.



c) Select the location to save your image.

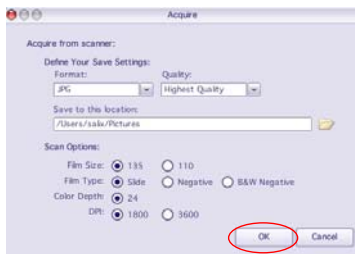


- d) There are two film sizes (135 film, 110 film) to choose from. You are suggested to select 135 film, most users do not have 110 film.
(110 Film Holder is an optional part.)



- e) Select the film type you are going to scan.

- f) Click "OK".



4. Capturing images

You will see the image to be captured in the live view window, move the holder to avoid dark edge of the holder appears in the live view window, the dark edge will be captured if it appears. If the dark edge is on top or bottom when taking slide image, tilt the device left or right will help to locate the image correctly.

Click “Capture” to save image to your computer.



5. Move the film holder and press “Capture” for the next film scan.

7. Edit The Pictures

First, click on the picture to select, and then use the ArcSoft tools to edit the pictures as you like.

Edit

Photo Editing Tools

The Photo Editing Tools module includes a complete set of photo enhancement, editing and retouching controls.

The windows can be stretched to provide a large size view of the active photo. Double click the module's tool bar to maximize the window to fill the computer screen.

In addition to the large photo workspace, the Photo Editing Tools module includes five distinct sets of controls:

1. Adjust

1.1 Enhance

The Enhance feature includes two types of controls:

- Auto Enhance



Click the "Auto Enhance" button to improve the overall quality of your pictures with a single click.

- Manual Fix

For precise image enhancement control, adjust the brightness, contrast and sharpen sliders.

How to enhance a photo manually:

1. Move the sliders to adjust the level of brightness, contrast, saturation, hue and sharpen for adjustment.
2. Use the zoom slider to get a closer look at how the adjustment affects the photo.
3. Click "Apply" if you like the result. Click "Cancel" if you do not.

1.2 Color

This feature is designed to fix digital photos that have unnatural color or appear too dark. It's also great for fixing scanned versions of old prints that have faded or whose colors have changed after many years.

How to fix the color of a photo:

1. Drag the color balance sliders to make the photo color appear more natural. Add red or yellow to make the photo warmer. Add blue or green to make the photo cooler.
2. Drag the Lighter/Darker slider to the left to reveal details hidden in a dark photo or to the right to make a faded photo look new again.
3. Click "Apply" if you like the result. Click "Cancel" if you do not.

1.3 Red-Eye

This feature makes it easy for you to fix a red-eye – a common problem in flash photography.

There are two ways to fix red-eye:

- Auto Fix 

1. Simply click the "Fix Red-Eye" button to automatically find and fix all red-eye.
2. If not all of the red eye is fixed, use the "Click to Fix" method.

- Manual Fix

1. Use the zoom slider on the toolbar to zoom in on the photo.
2. Drag the small white box inside the zoom navigator to move

over a red eye.

3. Place your cursor directly over the red eye and click.
4. Repeat the process until all the red eyes are fixed.
5. Click “Undo” if you make a mistake or don’t like the result.

1.4 Crop

This feature enables you to trim photos for a dramatic effect or cut off the distracting parts of a picture.

This feature enables you to trim photos for dramatic effect or cut off the distracting parts of a picture.

How to use the crop function:

1. Choose the crop orientation (portrait or landscape).
2. Select a fixed proportion for the crop rectangle (4:6, 5:7, 8:10) or choose “Custom” if you want to use a different proportion.
3. Resize the crop rectangle by clicking and dragging the red lines.
4. Move the crop rectangle into position by clicking and dragging inside the red box.
5. Click “Crop”. The area inside the rectangle will be kept, the area outside will be trimmed away.
6. Click “Undo” if you make a mistake or don’t like the result.

1.5 Straighten

This feature enables you to fix photos that appear to be tilted.

How to use Straighten:

1. Move the slider (or click the rotate buttons) until the photo appears straight.
2. Use the superimposed grid lines for vertical and horizontal reference.
3. Click “Apply” if you like the result. Click “Cancel” if you do not.

1.6 Blur Background

This feature can be used in subtle way – to tone down un-important background details, or for dramatic effect- by making the main subject of a photo “pop out” of the picture.

How to use the Blur Background function:

1. With your cursor, trace a line around the person or object you want to stand out. When you release the mouse button, the area outside the traced line will become slightly blurred.
2. Drag the first slider to make the transition between the blurred and non-blurred area sharp or smooth.
3. Drag the second slider to increase or decrease the amount of blur.
4. Click “Apply” if you like the result. Click “Cancel” if you do not.

Saving Your Results

When you're done editing a photo, click “Save as” to save your results. You can choose to overwrite the original file or save a new one.

Click “Close” to exit the Photo Editing Module.

2. Retouch

2.1 Healing Brush



The Healing Brush is good for fixing dust, scratches and removing skin blemishes.

How to use the Healing Brush to fix a skin blemish:

1. Establish a source point for the Healing Brush by holding the Shift key and clicking on an area of the skin that is close in color and texture to the area you want to heal.
2. Use the zoom control to zoom in on the blemish.
3. Adjust the size of the healing brush so the cursor (circle) is only slightly larger than the blemish.
4. Paint over the blemish. The area will be concealed.
5. Click “Undo” if you make a mistake or don’t like the result.



2.2 Clone

The Clone tool is good for the removing unwanted elements from a photo. It can also be used for a fun effect, like moving a nose from one person to another.

How to use the Clone tool to remove a telephone pole from the background of a photo:

1. Establish a source point for the Clone tool by holding the Shift key and clicking on an area of the sky that you want to use to paint over the telephone pole.
2. Adjust the brush size so the cursor (circle) is only slightly larger than the widest part of the telephone pole.

3. Click and hold your mouse button and carefully paint over the telephone pole. Do not release the mouse button until the job is done. The sky will be cloned into place.
4. Click "Undo" if you make a mistake or don't like the result.

2.3 Lighten/Darken



The Light/Darken tool is good for adjusting specific areas of a photo.

2.4 Smudge



Simulate the smearing of wet paint. Please click and drag the sliders below to change the brush size and sharpness.

2.5 Sharpen



Sharpen blurry areas. Click and drag the sliders below to change the brush size and transparency.

2.6 Blur



Smooth out rough areas. Click and drag the sliders below to change the brush size and intensity.

2.7 Paint Brush



Allows you to “paint” on your image when you click and drag the mouse. Click and drag the sliders below to change the brush size and transparency.

2.8 Line



Draw a straight line in the photo. Click and drag the sliders below to change the line width and transparency.

2.9 Eraser



Simulate an eraser, removing the image painting by paintbrush and line tools from your photo. Click and drag the sliders below to change the eraser size and effect.

3. Clipboard

Clip the pictures by selecting Rectangular, Elliptical, Freehand, Magic wand and Magnetic.

Note: For more detailed information, please refer to the [Help section] of program.

8. Appendix

Specifications

Image Sensor	1/4", 3 Mega CMOS Sensor
Lens Specification	F=2.8, f=3.85, 4P
Color Balance	Automatic
Exposure Control	Automatic
Support Film Size Auto Cropping	135 Film (36mm x 24mm)
Support Film Type Auto Converting	Slide Color Negative Film Black & White Negative Film
Focus Range	Fixed Focus
PC Interface	USB 2.0
Scan High Resolution	1800 dpi (enhances to 3600 dpi via interpolation)
Data Conversion	24 bits R.G.B color channel (48 bits color depth option in Medialmpression)
Image Format	135 film 3:2 ratio
Light Source	3 white LED
Power	From USB port
Dimension	8.1(H) X10.6(W) X10 (L) cm
Bundled Software	ArcSoft Medialmpression

Specifications are subject to change without prior notice.

System Requirements

PC System Requirements

- Intel® P4 2.0 GHz or equivalent AMD Athlon
- Free USB2.0 port
- 512MB RAM internal memory minimum
- 500MB free hard disk space
- 800 x 600 pixel color monitor
- CD-ROM drive
- nVIDIA GeForce MX440 or above, AMD (ATi) Radeon 9200 or above
- DirectX 9.0 or higher
- Windows® XP Service Pack II / Vista™ / Windows 7

Mac System Requirements

- Power PC G5 or Intel Core Duo processor recommended
- Free USB2.0 port
- 768MB RAM internal memory minimum
- 500MB free hard disk space
- 800 x 600 color monitor
- CD-ROM drive
- Mac OS 10.5 or above

This symbol on the product or in the instructions means that your electrical and electronic equipment should be disposed at the end of its life separately from your household waste. There are separate collection systems for recycling in the EU. For more information, please contact the local authority or your retailer where you purchased the product.

