



**2.5" SATA TO USB External Enclosure**

**RX81U-AT-25A**

***User Manual***

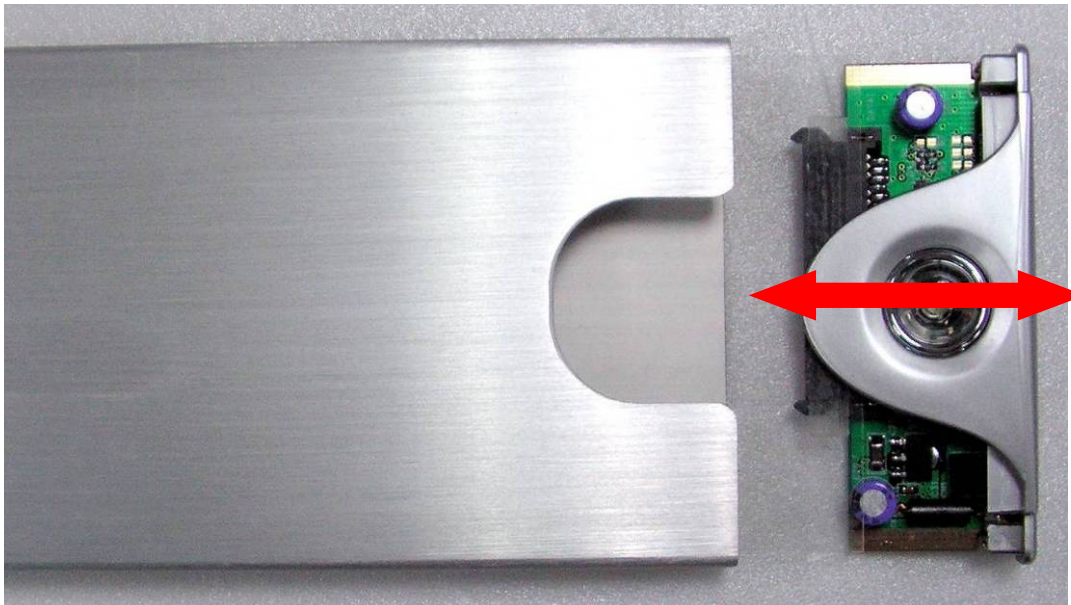


## Include

- 2.5" External Enclosure
- USB Y-Cable
- Carry Pouch
- User Manual
- Screw Pack
- Screw Driver

## Hardware Installation Guide

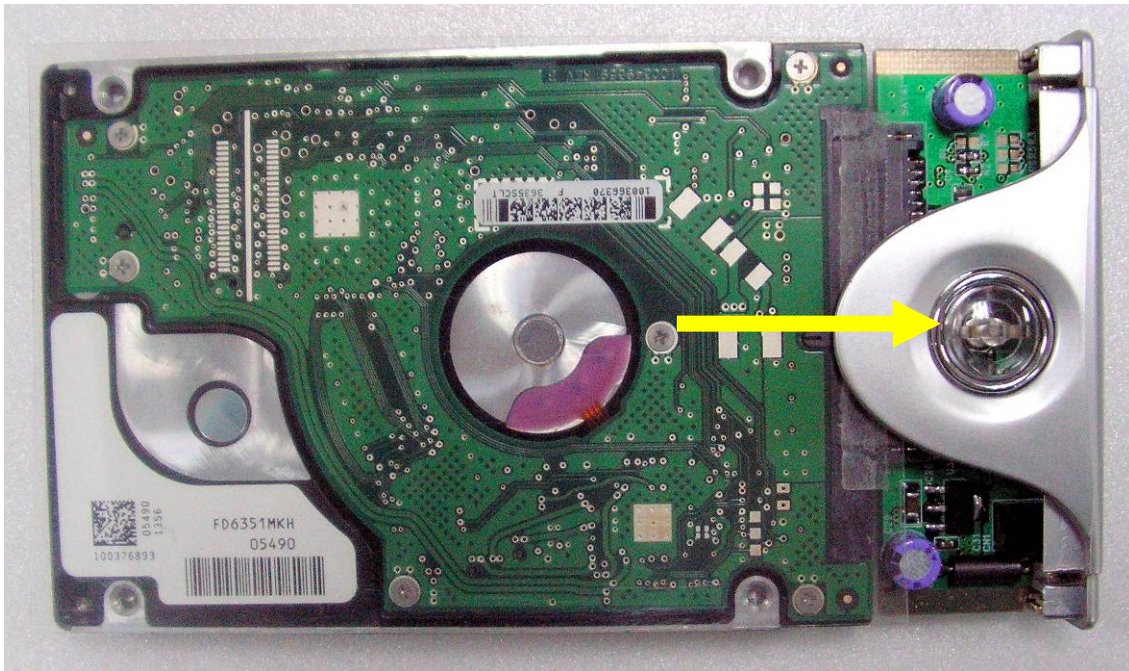
**STEP1:** Pull out the rear panel. You will see the internal structure of the external enclosure.



**! ATTENTION**  
New HDD Must Be  
● Formatted Before Use

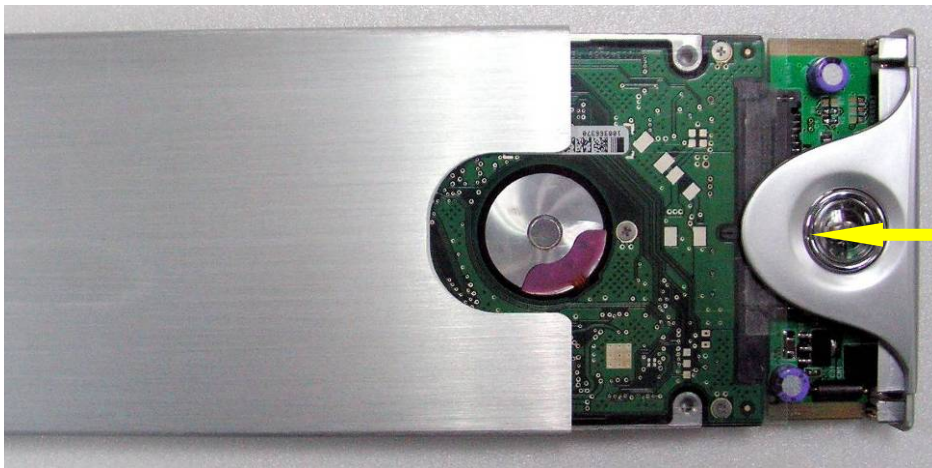
**STEP2:**

**SATA HDD :** Connect the HDD to the SATA connector. Make sure the connector is connected well.



**STEP3:** Insert the HDD and PCB board to the aluminum case.

**SATA HDD**



**STEP4:** Screw the back cover firmly to the body case.

**Please do unscrew on both side.**



**STEP5:** Screw the tray and external enclosure together.





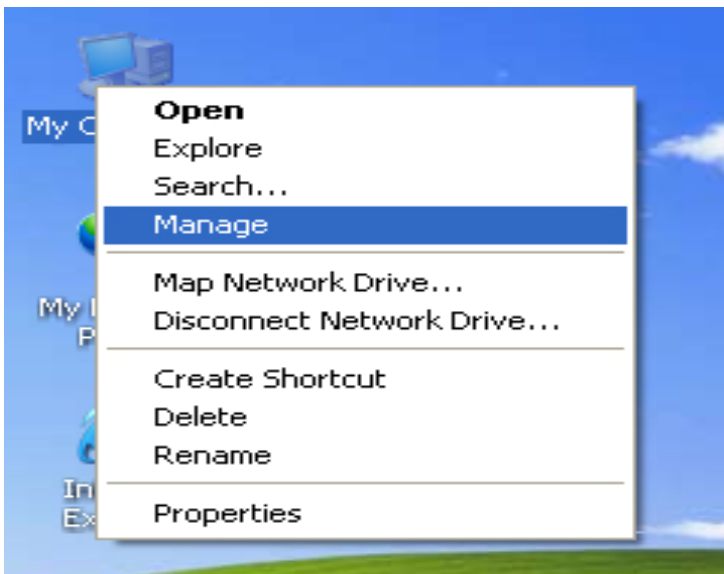
## External Enclosure Driver Installation

### HDD Formatting Guide

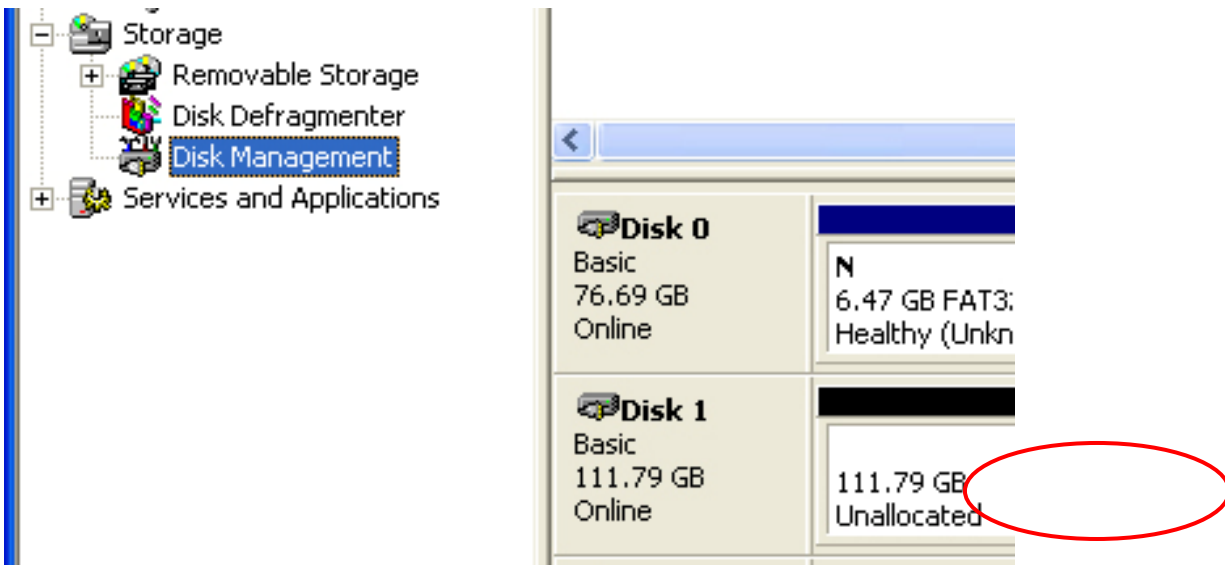
You may format your external HDD through USB2.0 connection.

Please make sure your external HDD is turned on and well connected to the PC before formatting the HDD.

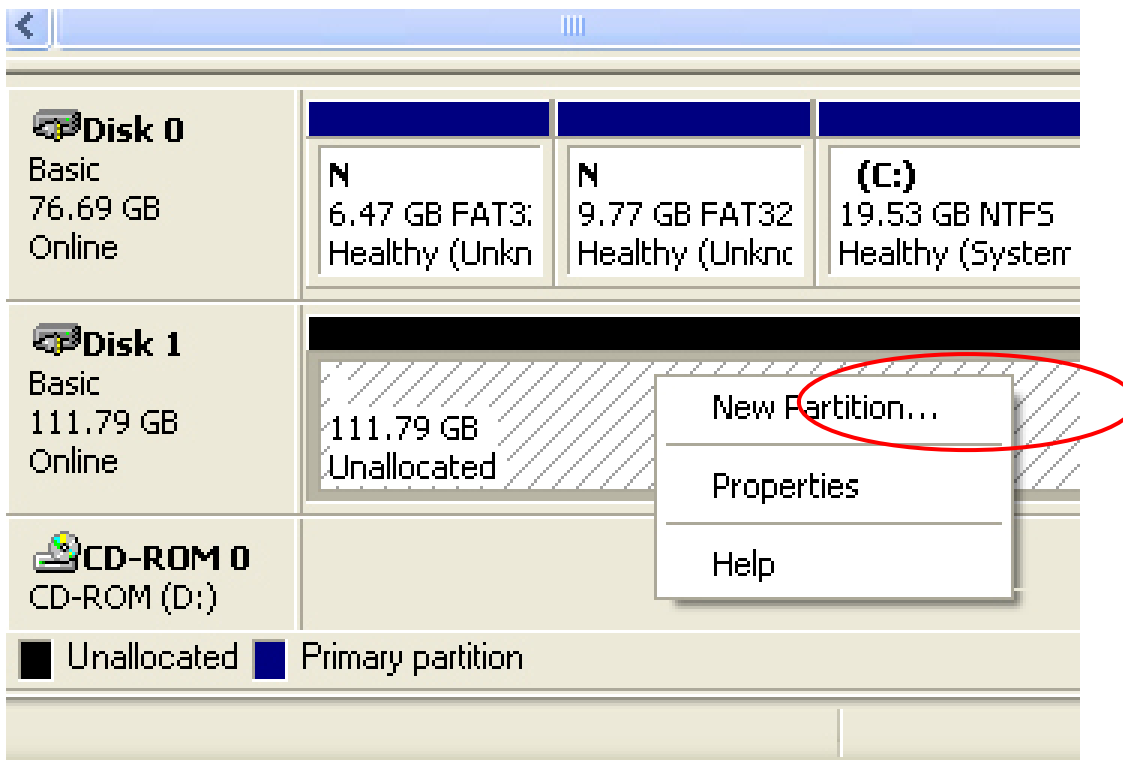
**STEP1:** Right-click "My Computer" icon and select the "Manage" column.



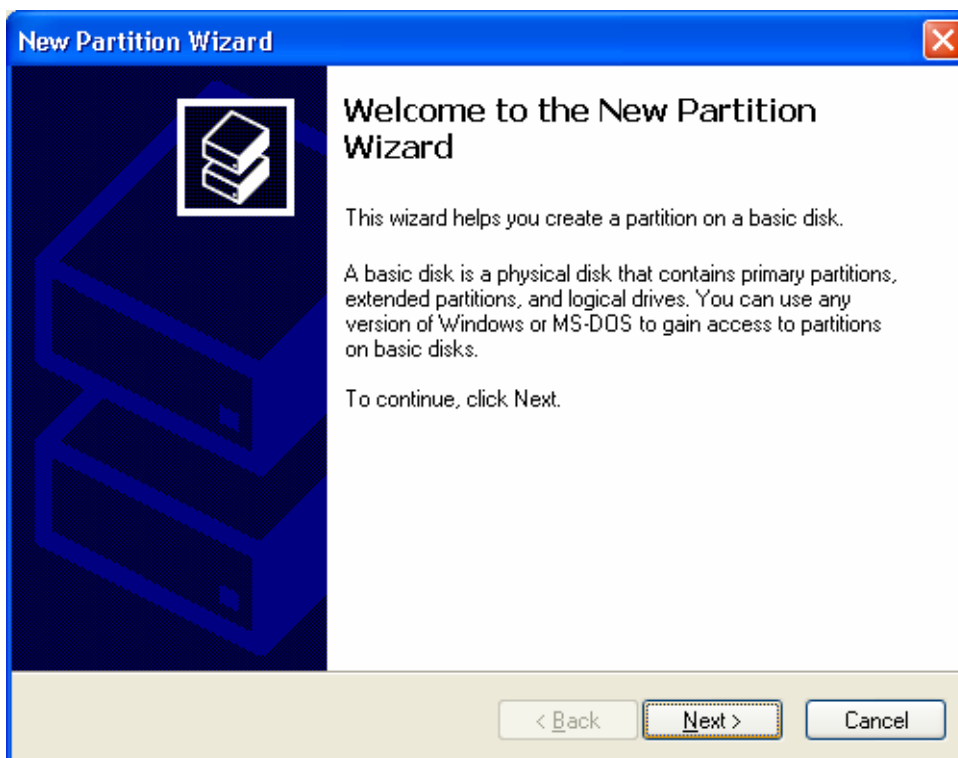
**STEP2:** Select "Disk Management" and you will see your External HDD showed "Unallocated".



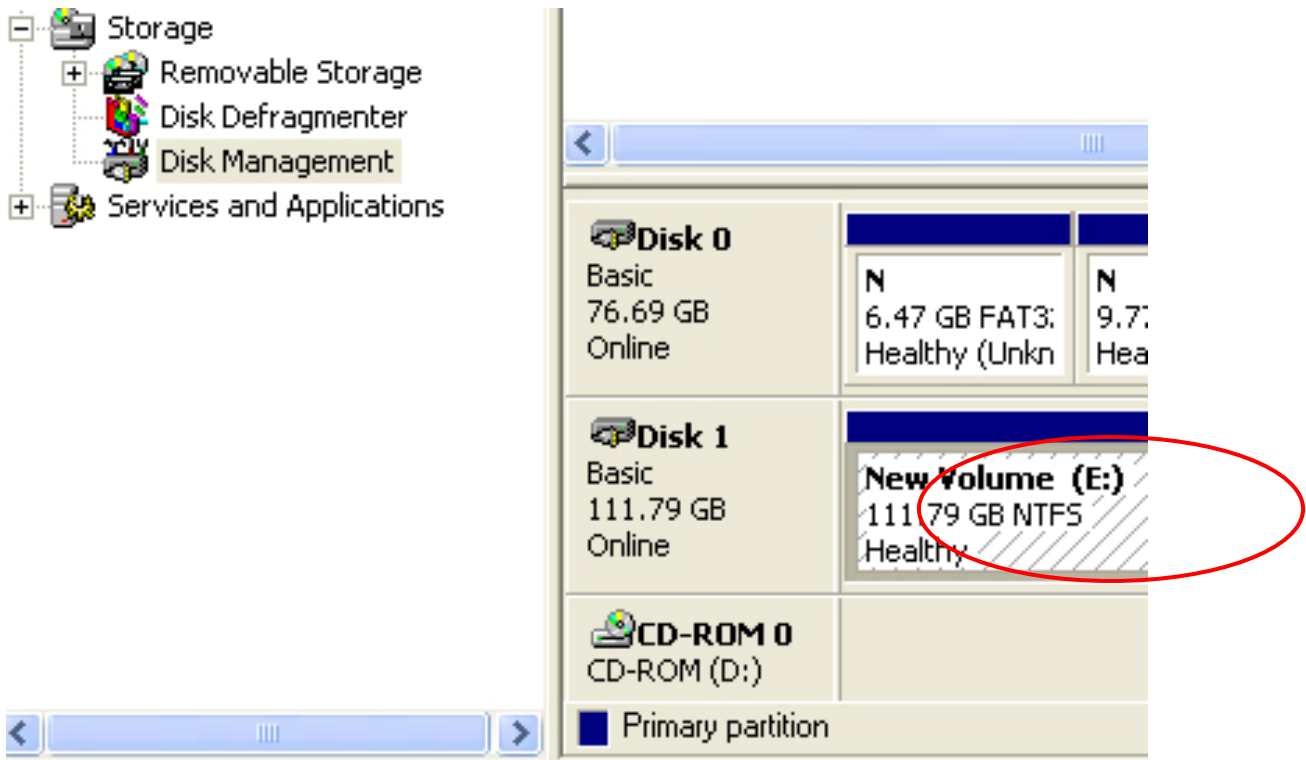
**STEP3:** Right-click on the “Unallocated” block and selects “New Partition”.



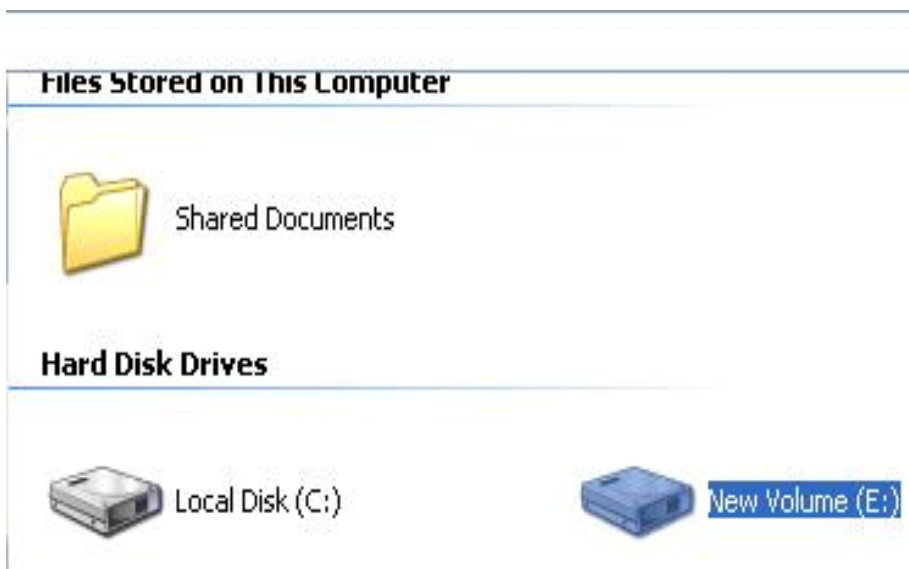
**STEP4:** The “New Partition Wizard” will appear. Please follow the instruction of the wizard to complete.



**STEP5:** When new partition is completed, the external HDD will be recognized as a “New Volume”.



**STEP6:** Double-click “My Computer”. You will see the new volume appears on your PC.



Thank you for purchasing a quality Rosewill Product.

Please register your product at : [www.rosewill.com](http://www.rosewill.com) for complete warranty information and future support for your product.