



2.5" SATA to USB & 2 x Firewire 800
External Enclosure
RX82-MP-SUF82 BLK/SLV
User Manual

Introduction

Icon Key

Throughout this manual you will see icons on the left margin that denote either Notes or Special Remarks as outlined below:



General Notes and Tips



Remarks for PC users and Microsoft Windows OS



Remarks for Mac users and Apple Macintosh OS

The RX82-MP-SUF82 BLK/SLV for SATA

The External Storage Enclosure “RX82-MP-SUF82 BLK/SLV for SATA” is made of high quality aluminum, excellent for heat-dissipation. Available with various types of interfaces, this is the perfect solution for additional external storage, data backup as well as for transferring data between computers and platforms.

Product Dimensions: 12.4cm x 7.6cm x 2.1cm or 4.88” x 2.99” x 0.83”

Available Interfaces

RX82-MP-SUF82 BLK/SLV model only

- FireWire 800 (1394b) x 2 port
- USB 2.0 & USB 1.1 x 1 port

Data Transfer Rate :

- FireWire 800 (1394b) up to 800Mbps
- USB 2.0 up to 480Mbps
- USB 1.1 up to 12Mbps

System Requirements

PC Requirements

- Minimum Intel Processor II 350MHz, 64MB RAM
- USB 1.1 equipped PC; WinME, Win2000, WinXP & Vista

- USB 2.0 equipped PC; WinME, Win2000, WinXP & Vista
- 1394b equipped PC; Win2000, WinXP & Vista

Mac Requirements

- Minimum Apple G3 processor (G4 for 1394b), 64MB RAM
- USB 1.1 equipped Mac; Mac OS 9.1, 9.2, 10.1.5 or higher
- USB 2.0 equipped Mac; Mac OS 10.2 or higher
- 1394b equipped Mac; Mac OS 10.2 or higher



Mac OS 8.6 users should use USB extension 1.41 or Firewire extension 2.6 and later, to be able to use USB 1.1 or 1394a.

Please NOTE

In order to enable HOT-SWAP function, please check to make sure the motherboard supports HOT-SWAP function. Otherwise, the hot swappable function won't be work as well. (Please refer back to motherboard user guide)

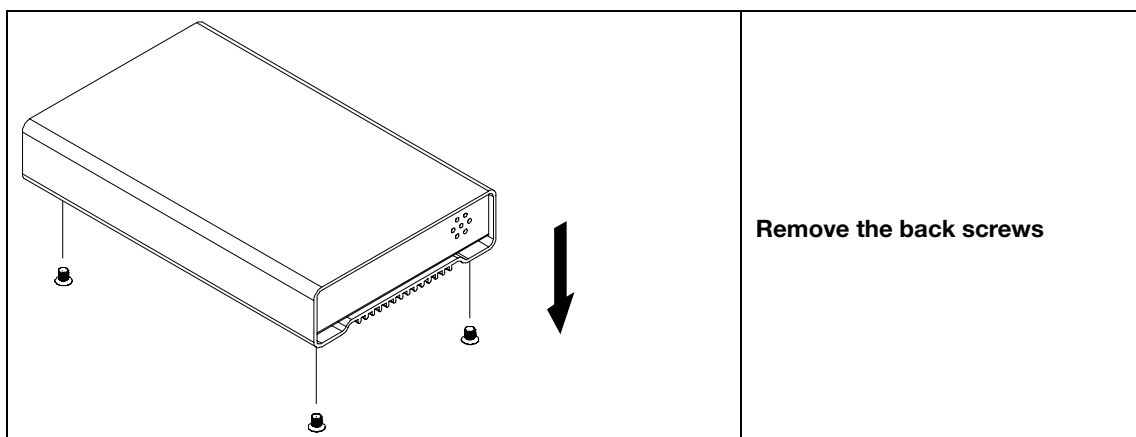
Package Contents

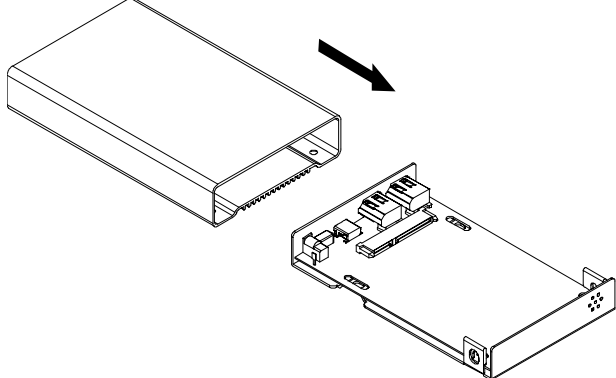
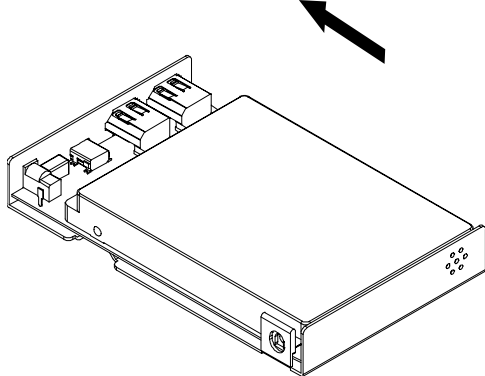
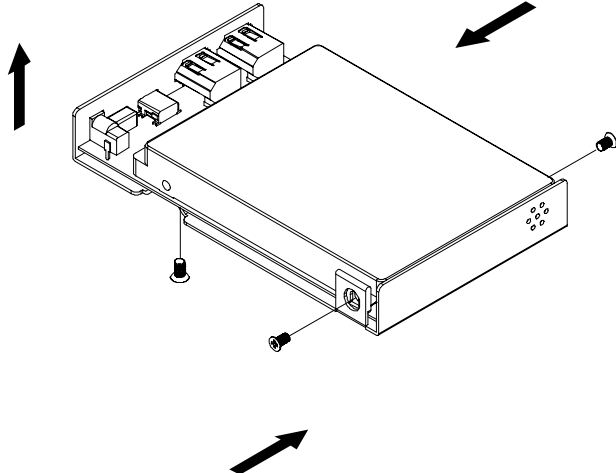
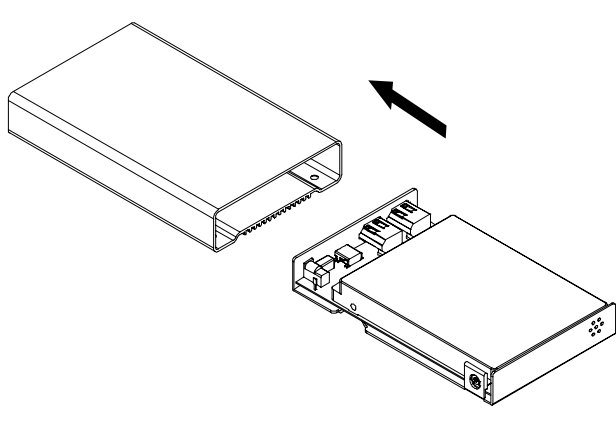
- 2.5" External Enclosure
- Interface Cable
- Manual

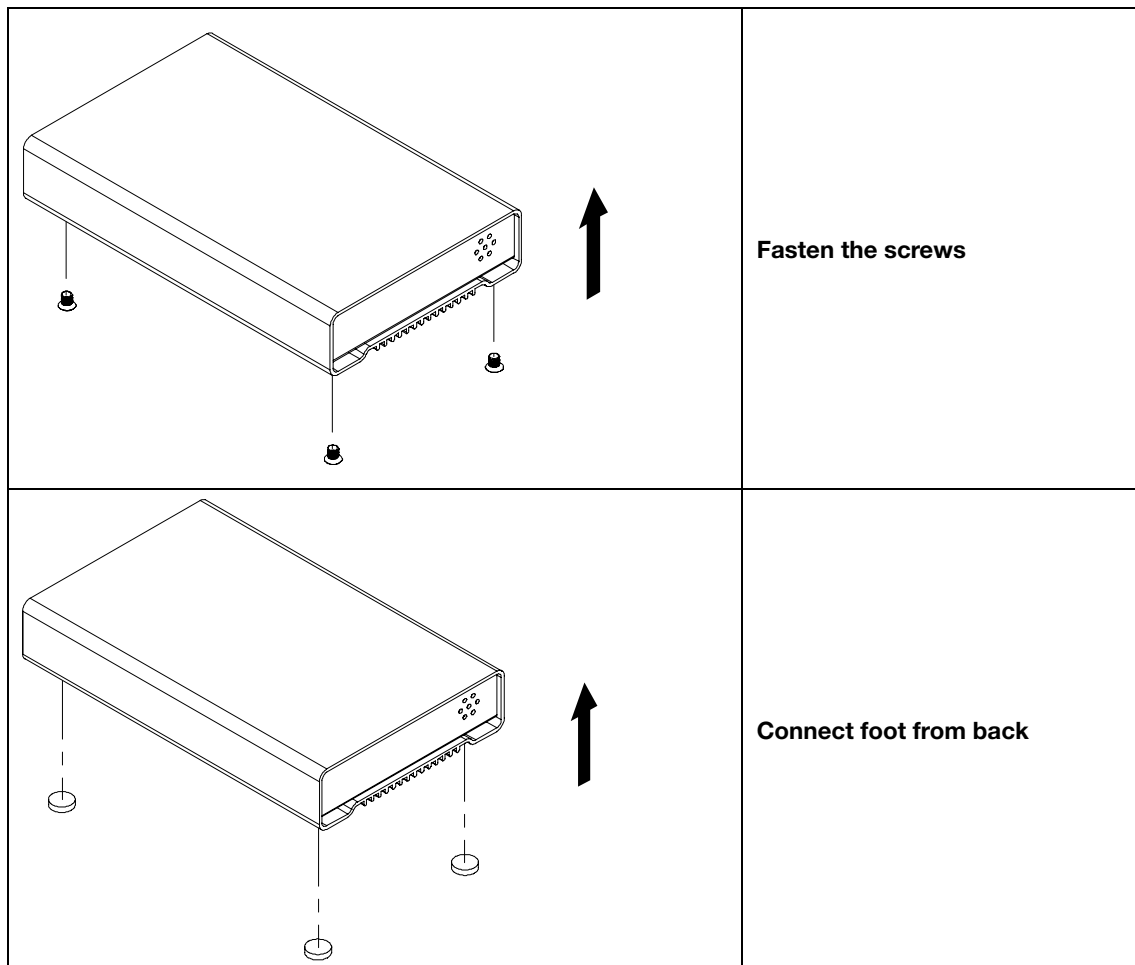


Package Content may vary, depending on vendor & version.

Installation Guide



 <p>A line drawing showing the aluminum case being lifted away from the enclosure. An arrow points from the case towards the enclosure, indicating the direction of removal.</p>	<p>Remove the Aluminum case</p>
 <p>A line drawing showing a hard drive being inserted into the enclosure. An arrow points from the drive towards the enclosure, indicating the direction of insertion.</p>	<p>Connect hard drive</p>
 <p>A line drawing showing the enclosure with three screws being inserted into the top and bottom. Arrows point from the screws towards the enclosure, indicating the direction of installation.</p>	<p>Install and fasten screws</p>
 <p>A line drawing showing the aluminum case being attached to the enclosure. An arrow points from the case towards the enclosure, indicating the direction of connection.</p>	<p>Connect the Aluminum case</p>



System Set Up

Connection to your Computer

A few tips on how to connect your external storage enclosure:

- Do not expose the product to water or humid conditions
- Only one computer at the time can access the drive
- Firewire can be daisy chained
- All devices in a daisy chain have to be switched on to permit the hub/daisy chain function
- Do not cover the Enclosure and leave enough room around it for the drive to cool down
- We recommend using the cables supplied with your product
- Always check for visible damage and defects of interface cables before using it
- If possible, arrange the cables so they do not cross each other

Power Management

Bus power is supported for device with 9pin-9pin Firewire connectors. Your port on the host side has to provide sufficient bus power to enable this function.

For USB, if the supplied bus power is limited or insufficient, an external power adapter or additional USB power cable is required. For optimal power consumption, we recommend using a short USB cable (20-30cm) and a drive with lower power consumption.

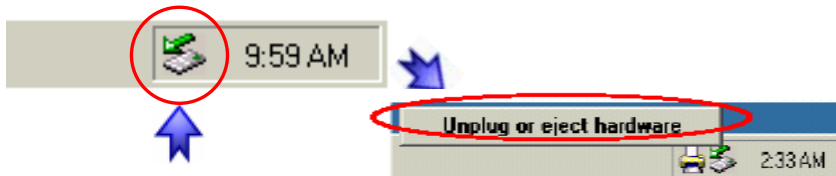
Installation on a PC

Win98SE, Win2000, WinXP or VISTA with a USB or Firewire connection:

- Turn on your Computer and start Windows
- Connect the RX82-MP-SUF82 BLK/SLV for SATA and turn it on
- Let Windows search and install the driver automatically
- Open "My Computer" to see your external hard drive **

Unplug Procedure:

- Click on the taskbar icon for external hardware
- Choose your external hard drive and confirm to remove it



** For factory new drives and formatting, see "Partitioning & Formatting"



If the system doesn't recognize the drive, turn on the power first, before connecting the USB/Firewire cable or connect the device before booting your Operating System.



Win98 does not support Firewire, you need to upgrade your OS to Win98SE or higher.



For safe removal of your drive and to assure that no data is lost, always follow the unplug procedure. If not, an error message will show up.

Installation on a Macintosh

Mac OS 9.x or Mac OS 10.x Mac OS 10.2 or higher with a Firewire or USB connection:

- Turn on your computer and start Mac OS
- Connect the RX82-MP-SUF82 BLK/SLV for SATA and turn it on
- No driver installation required
- The external drive will mount and show up on your desktop**

Unplug Procedure:

- Drag the external hard drive icon into the trash bin
- Turn off your device



** For factory new drives and formatting, see "Partitioning & Formatting"



If the system doesn't recognize the drive, turn on the power first, before connecting the USB/Firewire cable or connect the device before booting your Operating System.



For Mac OS 8.6, the USB extension has to be at least v1.41.



For Mac OS 8.6, the Firewire extension has to be at least v2.6.



For safe removal of your drive and to assure that no data is lost, always follow the unplug procedure. If not, an error message will show up.

Partitioning & Formatting

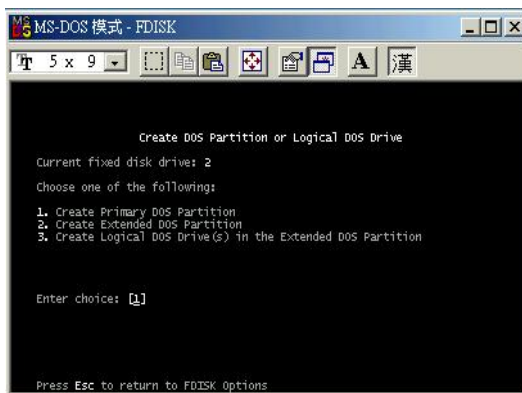
Be aware that this will destroy all your existing data on the drive, so make sure you have a backup! This step is usually only required the first time you install a factory new hard drive, if you change the format or want to erase all data on your drive.

PC running Win98/SE or WinME:

MS-DOS command "fdisk" (press Enter to confirm)

- Type "fdisk" and press Enter
- Select "Y" and press Enter
- Enter "5" to change the drive
- Select the drive you want to format

- Choose "1" and follow the onscreen instructions



You can choose to create several partitions but be aware that if you want to change this at a later point, it's required to format the drive again or use 3rd party software.



Win98/SE and WinME do not recognize NTFS formatted drives, so if you want to use your drive on those platforms, we recommend you to use FAT32 instead.



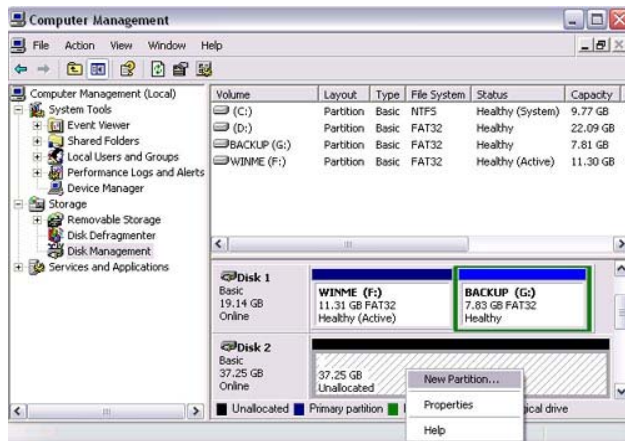
If you use this device to backup your data using a 3rd party software running MS-DOS, we recommend you to format the drive using FAT32.

PC running Win2000, WinXP or VISTA:

Disk Management Program

- Right click on "My Computer" and choose "Manage"
- Select "Disk Management"
- Choose the drive you want to format and right click on it for further commands (Choose New Partition)

- Follow the Partition Wizard



Mac OS does not recognize NTFS formatted drives, to use your device on both platforms, we recommend you to use FAT32.



If you use Win2000, WinXP or WinVISTA and FAT32, the biggest single partition you can create will be 32GB. To create larger partitions, you need to use the DOS command under Win98SE or WinME or change to NTFS format.



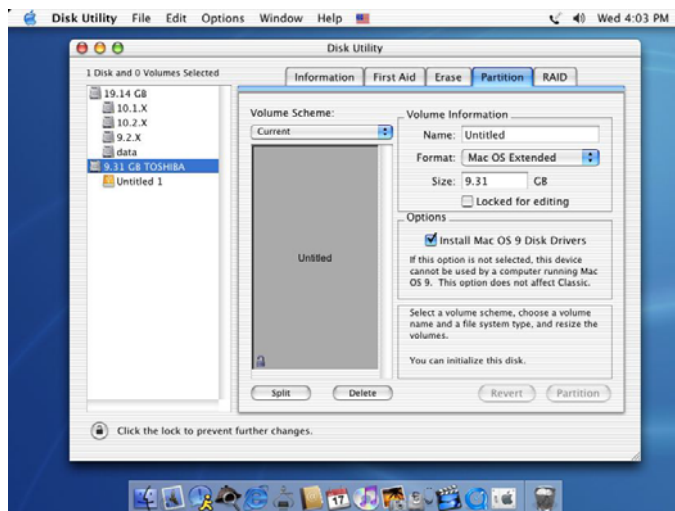
If you can not see the drive, make sure the drivers are installed properly and the power is turned on!

Mac OS:

Mac OS9.2 and earlier, does not support creating partitions on an external drive. To do that, you would need to purchase additional 3rd party software, connect the drive to the internal SATA connection or upgrade to OS X. Initializing the drive can be done on all Operating Systems.

For Mac OS X, use the Disk Utility to format and create partitions on your external disk.

- Select “Disk Utility” in the utilities folder
- Choose your external drive and format it according to your requirement



If you want to use your drive on a PC running Microsoft Windows as well as on your Mac, we recommend you to use a PC to format the drive. Choose FAT32 when formatting and do not change anything on the partition or format on your Mac, otherwise the PC will not be able to recognize the drive anymore.



If you can not see the drive, make sure there are no extension conflicts and the power is turned on!

Thank you for purchasing a quality Rosewill Product.

Please register your product at : www.rosewill.com for complete warranty information and future support for your product.