



NEON | **M55**
ULTIMATE GAMING MOUSE



INSTALLATION INSTRUCTIONS

1. Plug USB connector of **NEON M55** to a USB port of your PC or laptop.
2. Download the driver from <http://www.rosewill.com/downloads/>
3. Double click "Setup.exe" to start the installation program.
Click "Next" to continue
4. Select the folder to save the driver and click "Next" to continue
5. Installation run automatically; click "Finish" to complete the installation

SPECIFICATIONS

- Interface: USB
- Acceleration: 20G / 100 IPS
- DPI: 800 / 1600 / 2400 / 3000 / 4000 / 6000
- Polling Rate: 125 / 250 / 500 / 1000 Hz
- Backlight: RGB
- Cable Length: 5.9ft (1.8m)
- Dimension: 5.24 x 2.89 x 1.63 inch (133 x 73.5 x 41.3 mm)

PACKAGE CONTENTS

- NEON M55 Ultimate Gaming Mouse
- User Manual

OPERATION SYSTEM

1. Windows XP / Windows 7 / Windows 8 / Windows 8.1 / Windows 10
2. Free USB 1.1/ 2.0 port
3. 50 MB free hard disk space



BUTTON FUNCTIONS

1. Left button
2. Browser forward
3. Browser backward
4. Right button
5. Scroll button
6. DPI cycle button
7. DPI Group switch



OPERATIONS

Via the software suite, you can adjust the buttons configuration and customization. You can save different configurations in each profile to maximize your gaming experience in every game you play.

USER PROFILES:

You can save different configurations in each profile to maximize your gaming experience in every game you play. Select “Configuration” to create profiles.



MACRO MANAGER:

1. Select “Macro manager” to begin script recording.
2. Create a name to your script and press enter on your keyboard to confirm.
3. Press “Start record”.
4. Press your desired script.
5. Press “Stop record” when your script is complete.

MORE MACRO TOOLS:

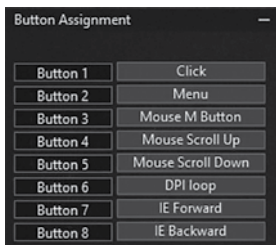
- Record delays between keys: Will activate time delay recording between keys.
- Loop times: Will loop the script. Change number of loops in the square box.
- Time delay: Double click on one of your recorded macros to change the time.
- Always press “OK” to exit the macro manager.





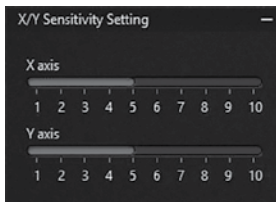
ASSIGN MACRO SCRIPT TO BUTTON:

1. Go to “Button assignment”.
2. Select any of the buttons from 1-6.
3. You can find your macro keys in the drop down menu under “Macro assignment”.
4. Select the macro and assign it to the button.
5. Press “Save” to confirm and change the default button to your macro script.



X/Y sensitivity setting:

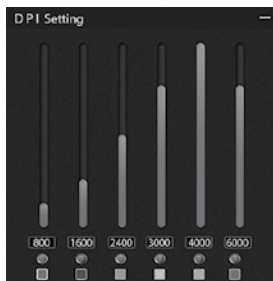
Select “X/Y sensitivity setting” to adjust the two axels individually.





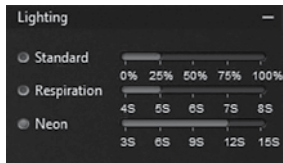
DPI SETTINGS AND BACKLIT COLOR:

1. Use the DPI switch on the bottom of the mouse to choose “DPI Dial Down (800/1600/2400)” or “DPI Dial Up (3000/4000/6000)”.
 2. Use the DPI cycle button on top of the mouse to cycle 800/1600/2400 or 3000/4000/6000.
- Click on the numbers to customize DPI level.
 - Click on the color box to select the color for the LED light.



LIGHTING EFFECTS:

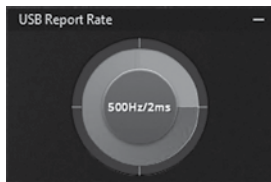
The lighting effects are editable.





USB REPORT RATE:

-- 4 levels report rate are available.



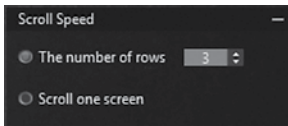
DOUBLE CLICK SPEED:

-- Change the double click speed.



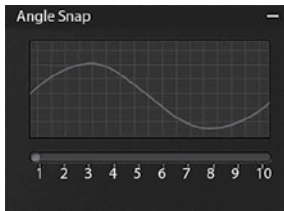
SCROLL SPEED:

--Change the scroll speed.



ANGLE SNAP:

-- Change the cursor movement by applying "Angle snap".





Thank you for purchasing a quality Rosewill product.
Please register your product at www.rosewill.com for complete warranty information
and support for your product.

Rosewill[®] **Technical Support Information**
techsupport@rosewill.com • 1-800-575-9885