



2.5" SATA TO USB External Enclosure

RX25-AT-SC-BLK/SLV

***User Manual***

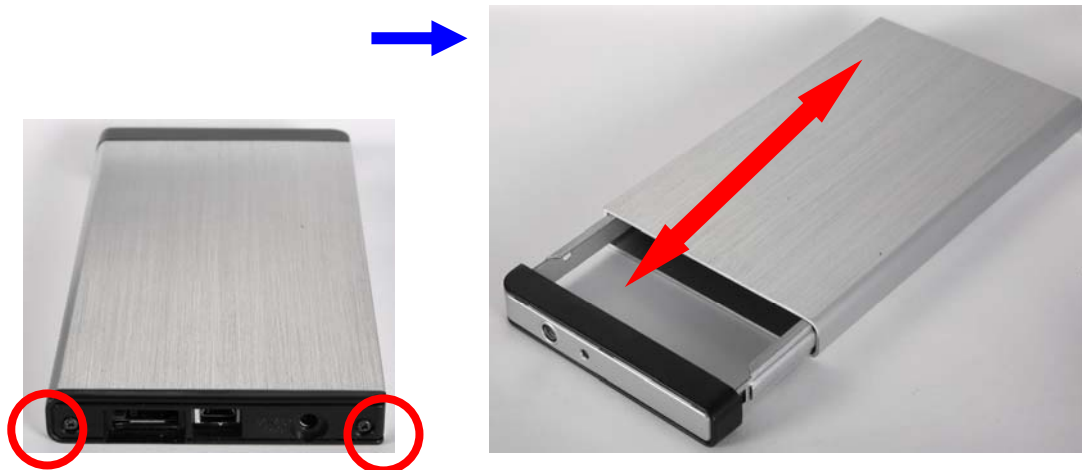


## Hardware Installation Guide

☆ Please follow the instructions and make sure your hard drive is successfully installed to the external enclosure!

### STEP1 :

Release the 2 screws then pull out the rear panel and tray.



### STEP2 :

Place the HDD into the tray.

Push the HDD to connect the SATA connector.



**Note: Make sure all connectors are connected well.**

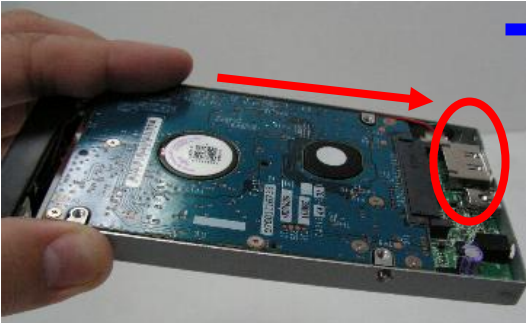
### STEP3:

Screw the HDD on the tray tightly.

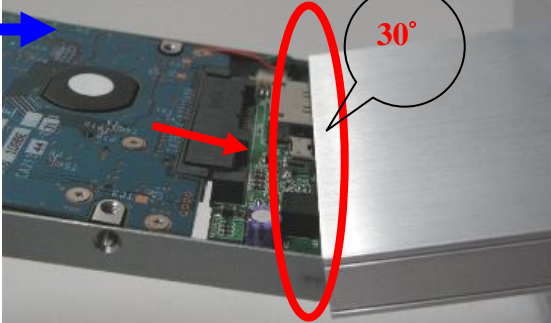


**Note: Please slope tray 30° to the case, so it can be push-in smoothly without cause.**

1.



2.



3.

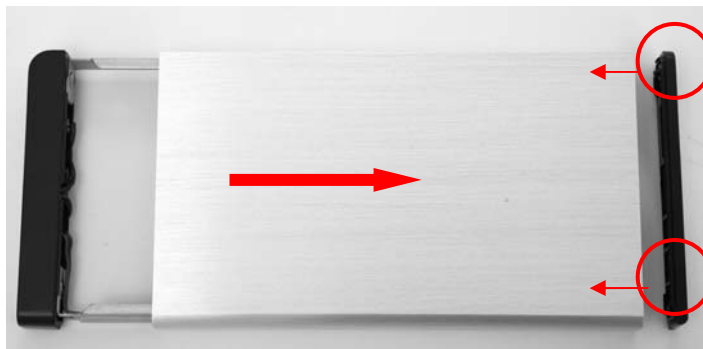


4.



**STEP4:**

Screw the rear panel and enclosure together.

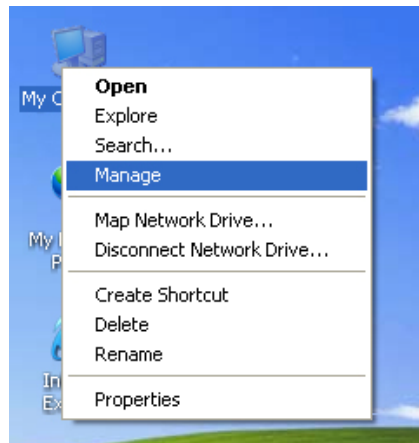


## HDD Formatting Guide

- ☆ You may format your external HDD through USB connection.
- ☆ Please make sure your external HDD is turned on and well connected to the PC before formatting the HDD.

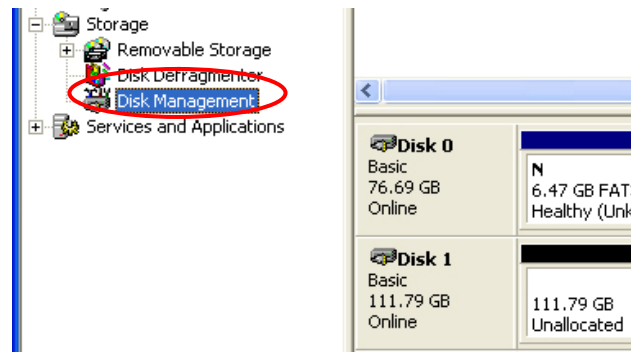
### STEP1 :

Right -click “My Computer” icon and select the”Manage” column.



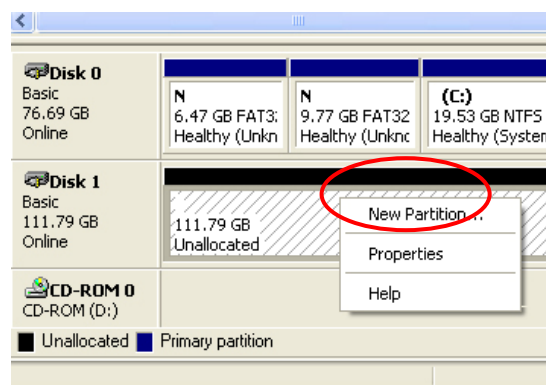
### STEP2 :

Select “Disk Management” and you will see your External HDD showed “Unallocated”.



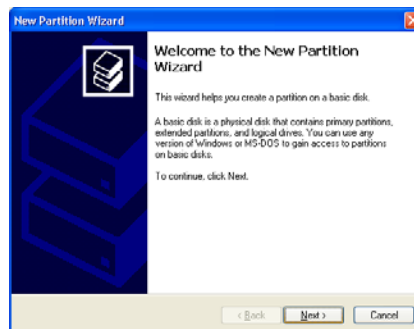
### STEP3 :

Right-click on the “Unallocated” block and select “New Partition”.

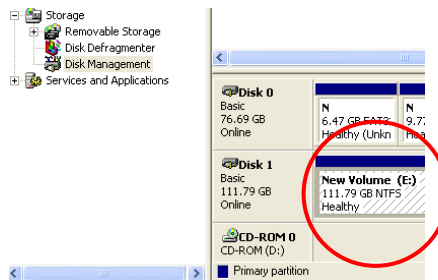


**STEP4:**

The “New Partition Wizard” will appear. Please follow the instruction of the wizard and complete the partition.

**STEP5:**

When new partition is completed, the external HDD will be recognized as a “New Volume”.

**STEP6 :**

Double-click “My Computer”. You will see the new volume appears on your PC.



Thank you for purchasing a quality Rosewill Product.

Please register your product at : [www.rosewill.com](http://www.rosewill.com) for complete warranty information and future support for your product.